

CYLINDA SOFT MODEL 5042.001



STANDARD VERSION

Polsterhocker aus Schaumstoff mit Anti-Rutsch Unterseite und abnehmbarem Bezugsstoff.

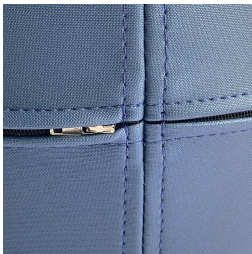
OPTIONS

- Cover fabric fleece
- Upholstery fabric WOOL (price group 3)
- Upholstery fabric PROTEX (price group 3)

TECHNICAL SPECIFICATIONS

SEAT HEIGHT	14.17 "
DIAMETER	15.75 "
WEIGHT	4 lb

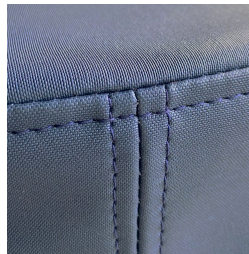
BENEFITS/SPECIALS



Abnehmbarer Bezugsstoff mit verdecktem Reißverschluss



Durch die Anti-Rutsch Unterseite bleibt der Hocker auch auf glatten Böden an seinem Platz



Langlebige Qualität durch hochwertige Verarbeitung

FABRIC PROPERTIES

FLEECE Price group 1

100% polyester | flame retardant BS 5852:Part1:1979 (cigarette) | 14.18 oz/y² | 100,000 Martindale tours | liting 4 | ÖKO-Tex 100

Our range of materials and colors can be found in the A2S material overview.



Management System
ISO 14001:2015
ISO 9001:2015
www.a2s.com
© 2018/2019



A2S-Furnishing Systems Ltd.
ASS-Einrichtungssysteme GmbH
info@a2s.com
WWW.A2S.COM

CYLINDA SOFT

MODEL 5042.001



WOOL Price group 3

100% wool | flame retardant according to EN 1021 1&2 | 16.23 oz/y² +/-5% | 35,000 Martindale tours | linting 4 | tested for harmful substances

PROTEX Price group 3

surface 100% vinyl / fabric 100% polyester | flame retardant according to EN 1021 1&2, DIN 4102 B2 | 24.16 oz/y² | 300,000 Martindale tours | no linting | wipeable with soap and water, water repellent, antibacterial, anti-static, stain resistant, resistant to blood and urine, mold resistant backing and surface, resistant to disinfectants