

# FLEXLAB TRANSPORT CADDY WITH TOP PLATE AND DOOR

## MODEL 4131.003



### STANDARD VERSION

4 swivel castors, 2 with total brakes.

Decor in in U023.

Storage compartment open at the top, space for up to 9 small tidy boxes at the bottom.

Side support strip and locking mechanism for top panel made of compressed fiberboard with black core, thickness: 16 mm, underside with cut-outs for form-fit connection with 2 FLEXLAB transport caddies.

Lockable door made of compressed fiberboard with black core, thickness: 16 mm, with 270° opening angle, with acrylic glass panel, left hinged.

### OPTIONS

### TECHNICAL SPECIFICATIONS

WIDTH	14.96 "
TOTAL HEIGHT	41.34 "
DEPTH	20.28 "
WEIGHT	90 lb

Our range of materials and colors can be found in the A2S material overview.



A2S-Furnishing Systems Ltd.  
ASS-Einrichtungssysteme GmbH  
info@a2s.com  
WWW.A2S.COM

# FLEXLAB TRANSPORT CADDY WITH TOP PLATE AND DOOR

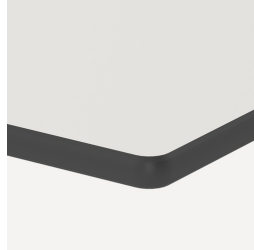
## MODEL 4131.003



### BENEFITS/SPECIALS



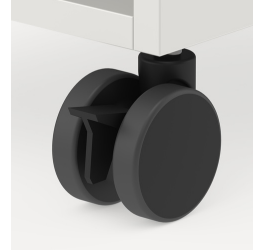
Board material melamine coated with robust plastic edge



Robuste und widerstandsfähige CDF-Platte



Tidy boxes for storing gloves, hats etc.



Mobilität durch 4 stabilen Rollen, davon 2 feststellbar



Verriegelung für Aufsatzplatte



Die verglaste Front gibt freie Sicht auf die Materialien



Zusätzliche Arbeitsfläche durch Aufsatzplatte