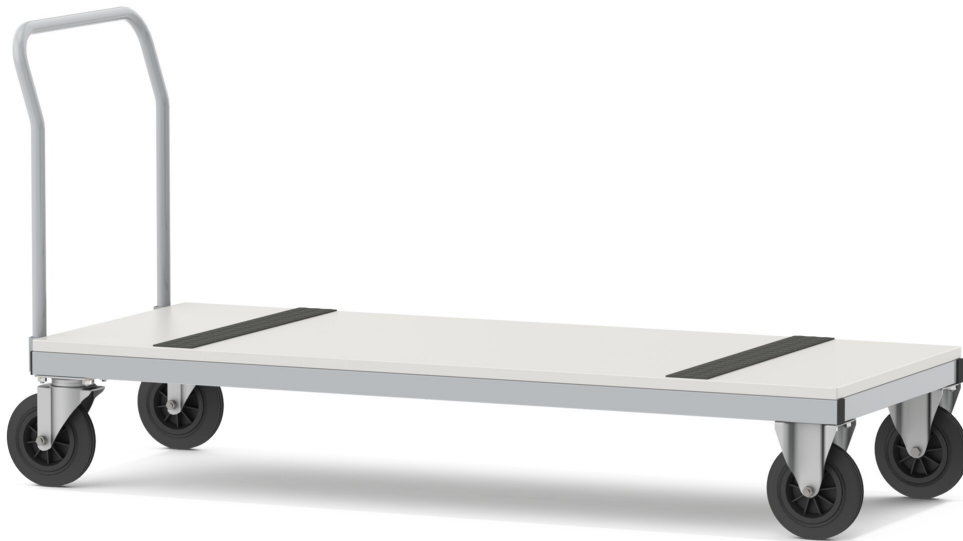


STACKING TROLLEY FOR FOLDING TABLES, 170 X 70 CM TO 180 X 80 CM

MODEL 3899.187



STANDARD VERSION

Strong frame with 2 large swivel castors and 2 large fixed castors in front, chrome silver 9006, max. load 10 tables.
Cover plate, 3-layer chipboard (E1), melamine coated, highly abrasion-resistant, with 3 mm plastic edge, thickness: 19 mm.

OPTIONS

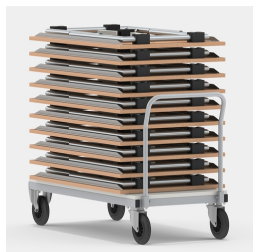
TECHNICAL SPECIFICATIONS

WIDTH	75.59 "
HEIGHT	38.19 "
DEPTH	27.95 "
WEIGHT	102 lb

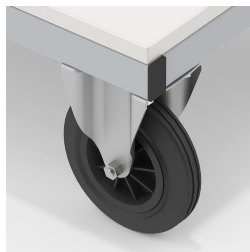
BENEFITS/SPECIALS



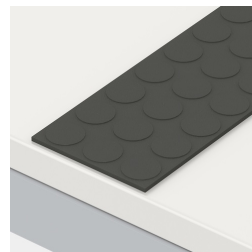
Board material melamine coated with robust plastic edge



Maximum load 10 tables



Smooth-running, heavy-duty hard rubber casters, steerable on one side with stop



Abrasion resistant slip stop with knobs



Proven many times in open plan and canteen

Our range of materials and colors can be found in the A2S material overview.



Management System
ISO 14001:2015
ISO 9001:2015
www.a2s.com
© 2018/2019



A2S-Furnishing Systems Ltd.
ASS-Einrichtungssysteme GmbH
info@a2s.com
WWW.A2S.COM