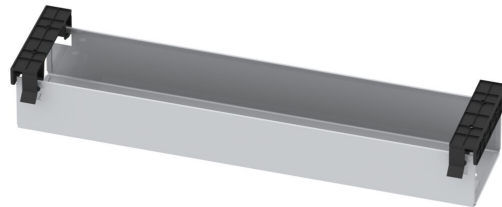


CABLE TRAY 600 MM MODEL 0901



STANDARD VERSION

Concealed cable management through closed, foldable metal cable tray 125x80 mm

OPTIONS

TECHNICAL SPECIFICATIONS

WIDTH	236.22 "
HEIGHT	3.15 "
DEPTH	4.92 "

BENEFITS/SPECIALS



Can be retrofitted at any time

Our range of materials and colors can be found in the A2S material overview.



Management System
ISO 14001:2015
ISO 9001:2015
www.a2s.com
© 2018/2019

**MADE
IN
GERMANY**

A2S-Furnishing Systems Ltd.
ASS-Einrichtungssysteme GmbH
info@a2s.com
WWW.A2S.COM