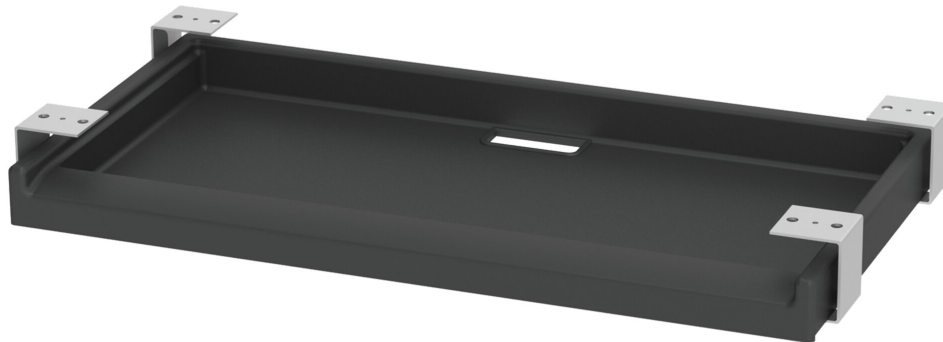


KEYBOARD PULLOUT MODEL 0909



STANDARD VERSION

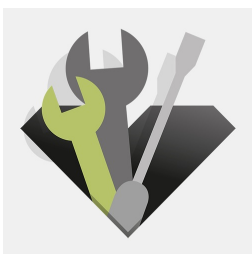
Keyboard drawer for mounting under the table top. Plastic housing with integrated pull-out guide for keyboards from: W 53 cm/D 21 cm/H 5 cm. Gray plastic.

OPTIONS

TECHNICAL SPECIFICATIONS

WIDTH	20.87 "
HEIGHT	2.17 "
DEPTH	8.27 "

BENEFITS/SPECIALS



Can be retrofitted at any time

Our range of materials and colors can be found in the A2S material overview.



A2S-Furnishing Systems Ltd.
ASS-Einrichtungssysteme GmbH
info@a2s.com
WWW.A2S.COM