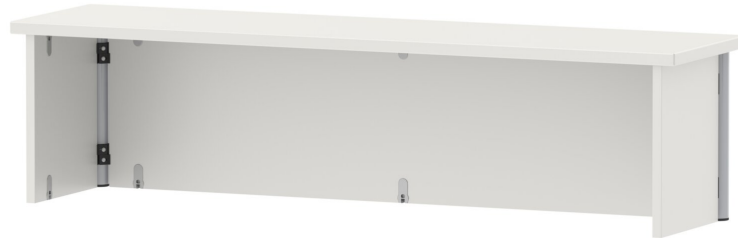


TABLE TOP FOR RECTANGULAR TABLE, FREE STANDING

MODEL 2053.140



STANDARD VERSION

Body, 3-layer particle board (E1), melamine coated, highly abrasion-resistant, with 1 mm plastic edge, thickness 19 mm.

Rear panel, 3-layer chipboard (E1), melamine-coated, highly abrasion-resistant, grooved all around, thickness 8 mm.

Top, 3-layer chipboard (E1), melamine coated, highly abrasion resistant, with 3 mm plastic edge, thickness: 25 mm.

Round tube: 40/2 mm, epoxy coated

OPTIONS

- Decoration group 2
- Table top with 40 mm corner radius
- Table top HPL glued
- Table frame chrome plated

TECHNICAL SPECIFICATIONS

WIDTH	55.12 "
HEIGHT	14.17 "
DEPTH	14.17 "
WEIGHT	97 lb

BENEFITS/SPECIALS



Melamine coated table top with robust plastic edge



High and deep enough for standard binders



Elegant look: continuous table leg

Our range of materials and colors can be found in the A2S material overview.



Management System
ISO 14001:2015
ISO 9001:2015
www.a2s.com
© 2018/2019



A2S-Furnishing Systems Ltd.
ASS-Einrichtungssysteme GmbH
info@a2s.com
WWW.A2S.COM