

## STANDARD VERSION

Body, 3-layer particle board (E1), melamine coated, highly abrasion-resistant, with 1 mm plastic edge, thickness 19 mm.

Rear panel, 3-layer chipboard (E1), melamine-coated, highly abrasion-resistant, grooved all around, thickness 8 mm.

Back panel, 3-layer chipboard (E1), melamine coated, highly abrasion-resistant, grooved all around, thickness 8 mm.

Cabinet including base.

Teacher compartments individually lockable.

**Note:** 1 folder height (OH)  $\hat{=}$  38.4 cm

## OPTIONS

- Decoration group 2
- Front HPL glued
- Shelf (additional)
- Handle PG 2
- Lock with pin cylinder change core
- Base adjustment
- Steel base (chrome silver 9006)

## STANDARD

DIN EN 14074, DIN EN 14073-2, DIN EN 14073-3, DIN EN 16121, DIN EN 16122

FEMB level:2017 (Level 3)

## TECHNICAL SPECIFICATIONS

<b>FOLDER HEIGHT</b>	5
<b>WIDTH</b>	31.50 "
<b>TOTAL HEIGHT</b>	80.31 "
<b>DEPTH</b>	17.32 "
<b>INSIDE MEASURE</b>	34.65x9.45x14.96 "
<b>COMPARTMENTS</b>	
<b>NO. OF</b>	36
<b>COMPARTMENTS</b>	
<b>NO. OF</b>	2
<b>ADJUSTABLE</b>	
<b>SHELVES</b>	
<b>NO. OF FIXED</b>	1
<b>SHELVES</b>	
<b>WEIGHT</b>	196 lb

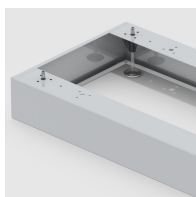
## BENEFITS/SPECIALS



Board material melamine coated with robust plastic edge



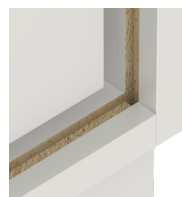
Metal cup hinges with 240° opening angle



Optionally with robust steel base



Carcass firmly dowelled and glued ex works



Resistance to warping due to 8 mm thick back wall

