



STANDARD VERSION

Body, 3-layer particle board (E1), melamine coated, highly abrasion-resistant, with 1 mm plastic edge, thickness 19 mm.

Rear panel, 3-layer chipboard (E1), melamine-coated, highly abrasion-resistant, grooved all around, thickness 8 mm.

Back panel, 3-layer chipboard (E1), melamine coated, highly abrasion-resistant, grooved all around, thickness 8 mm.

Cabinet including base.

Teacher compartments individually lockable.

Note: 1 folder height (OH) $\hat{=}$ 38.4 cm

OPTIONS

- Decoration group 2
- Front HPL glued
- Shelf (additional)
- Handle PG 2
- Lock with pin cylinder change core
- Base adjustment
- Steel base (chrome silver 9006)

STANDARD

DIN EN 14074, DIN EN 14073-2, DIN EN 14073-3, DIN EN 16121, DIN EN 16122

FEMB level:2017 (Level 3)

TECHNICAL SPECIFICATIONS

FOLDER HEIGHT	5
WIDTH	24.02 "
TOTAL HEIGHT	80.31 "
DEPTH	17.32 "
INSIDE MEASURE	34.65x11.02x14.96 "
COMPARTMENTS	
NO. OF	24
COMPARTMENTS	
NO. OF	1
ADJUSTABLE	
SHELVES	
NO. OF FIXED	1
SHELVES	
WEIGHT	148 lb

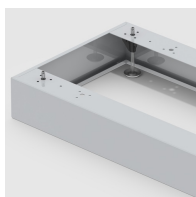
BENEFITS/SPECIALS



Board material melamine coated with robust plastic edge



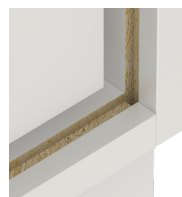
Metal cup hinges with 240° opening angle



Optionally with robust steel base



Carcass firmly dowelled and glued ex works



Resistance to warping due to 8 mm thick back wall

