

PAGHOLZ® GAS SPRING SWIVEL STOOL MODEL 8389



STANDARD VERSION

PAGWOOD® seat, with ergonomic two-dimensional shell shape. Surface melamine coated and pore sealed with a scratch, impact and abrasion resistant finish created in the pressing process.

Aluminum 5-star base, with infinitely variable gas lift height adjustment. Round tubular column: 1.97", epoxy coated. With plastic feet.

OPTIONS

- Seat decors (beech, maple, gray-white)
- PAGHOLZ® Color Wood - Price group 2
- PAGHOLZ® COLOUR WOOD
- Multiplex shell
- Multiplex COLOUR WOOD
- Felt floor protectors
- Load-dependent braking casters (SH +1.18")
- Polished aluminum base

STANDARD

FEMB level:2017 (Level 3)

DIN EN 1729-1, DIN EN 1729-2, DIN EN 16139

GS-zertifiziert gem. DIN EN 1729-1, DIN EN 1729-2

LOAD CAPACITY

276 lb

SIZES

| | |
|--------------|---------------|
| SIZE | 4-7 |
| CHAIR WIDTH | 24.80 " |
| SEAT HEIGHT | 14.57-20.47 " |
| CHAIR DEPTH | 24.80 " |
| STACKABILITY | - |
| WEIGHT | 11 lb |

Our range of materials and colors can be found in the A2S material overview.



A2S-Furnishing Systems Ltd.
ASS-Einrichtungssysteme GmbH
info@a2s.com
WWW.A2S.COM

PAGHOLZ® GAS SPRING SWIVEL STOOL MODEL 8389



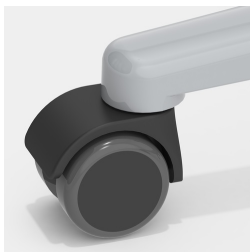
BENEFITS/SPECIALS



PAGHOLZ® from sustainable forestry



Height adjustment by safety gas spring



Optionally with load-dependent braked casters



Indestructible PAGHOLZ® shell, scratch, break and impact resistant; flame retardant



Extremely robust aluminum base