



STANDARD VERSION

Body, 3-layer particle board (E1), melamine coated, highly abrasion-resistant, with 1 mm plastic edge, thickness 19 mm.
 Rear panel, 3-layer chipboard (E1), melamine-coated, highly abrasion-resistant, grooved all around, thickness 8 mm.
 Back panel, 3-layer chipboard (E1), melamine coated, highly abrasion-resistant, grooved all around, thickness 8 mm.
 Doors, 3-layer particle board (E1), melamine coated, highly abrasion resistant, with 2 mm plastic edge, thickness 19 mm.
 Arch handle chrome matt
Note: 1 folder height (OH) Δ 38.4 cm
 Cabinet including base.

OPTIONS

- Decoration group 2
- Front decors price group 2
- Front HPL glued
- Shelf (additional)
- Handle PG 2
- Base adjustment
- Steel base (chrome silver 9006)

STANDARD

DIN EN 14074, DIN EN 14073-2, DIN EN 14073-3, DIN EN 16121, DIN EN 16122

FEMB level:2017 (Level 3)

TECHNICAL SPECIFICATIONS

FOLDER HEIGHT	5
WIDTH	47.24 "
TOTAL HEIGHT	80.31 "
DEPTH	17.32 "
NO. OF COMPARTMENTS	10
NO. OF ADJUSTABLE SHELVES	8
WEIGHT	187 lb

BENEFITS/SPECIALS



Board material melamine coated with robust plastic edge



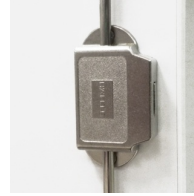
1 OH cabinet with handle or lock



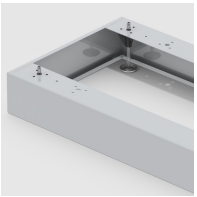
Metal cup hinges with 240° opening angle



Pull-out proof shelf supports



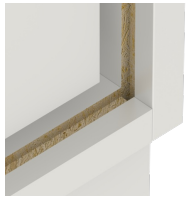
High quality locking bar



Optionally with robust steel base



Carcass firmly dowelled and glued ex works



Resistance to warping due to 8 mm thick back wall