

HINGED DOOR TOP CABINET (D 60 CM)

MODEL 4214.610



STANDARD VERSION

Body, 3-layer particle board (E1), melamine coated, highly abrasion-resistant, with 1 mm plastic edge, thickness 19 mm.

Rear panel, 3-layer chipboard (E1), melamine-coated, highly abrasion-resistant, grooved all around, thickness 8 mm.

Back panel, 3-layer chipboard (E1), melamine coated, highly abrasion-resistant, grooved all around, thickness 8 mm.

Doors, 3-layer particle board (E1), melamine coated, highly abrasion resistant, with 2 mm plastic edge, thickness 19 mm.

Arch handle chrome matt

Note: 1 folder height (OH) \triangleq 38.4 cm

OPTIONS

- Decoration group 2
- Front HPL glued
- Handle PG 2
- Front decors price group 2
- Shelf (additional)
- Lock with pin cylinder change core

STANDARD

DIN EN 14074, DIN EN 14073-2, DIN EN 14073-3, DIN EN 16121, DIN EN 16122

FEMB level:2017 (Level 3)

TECHNICAL SPECIFICATIONS

FOLDER HEIGHT	1
WIDTH	31.50 "
TOTAL HEIGHT	15.75 "
HEIGHT OF TOP CABINET	15.75 "
HEIGHT OF COMBI TOP CABINET	14.96 "
DEPTH	23.62 "
NO. OF COMPARTMENTS	1
WEIGHT	88 lb

Our range of materials and colors can be found in the A2S material overview.



A2S-Furnishing Systems Ltd.
ASS-Einrichtungssysteme GmbH
info@a2s.com
WWW.A2S.COM

HINGED DOOR TOP CABINET (D 60 CM) MODEL 4214.610



BENEFITS/SPECIALS



Board material melamine
coated with robust plastic edge



1 OH cabinet with handle or
lock



Metal cup hinges with 240°
opening angle



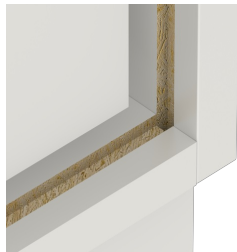
Pull-out proof shelf supports



High quality locking bar



Carcass firmly dowelled and
glued ex works



Resistance to warping due to 8
mm thick back wall