

# 4-LEG TABLE, METAL WELDED (120X60 CM) MODEL 1005.126



## STANDARD VERSION

Tabletop, 3-layer chipboard (E1), melamine coated, highly abrasion-resistant, with 0.12" plastic edge, thickness: 0.98".

**Note:** Table height specifications refer to a tabletop thickness of 0.98".

4-leg base frame, side parts round tube: 40/2 mm, frame square tube welded and rounded: 40/20/2 mm. Frame epoxy coated, with plastic floor protector with level compensation.

Table top shape: semicircular

**ATTENTION:** Observe chair frame width!

## OPTIONS

- Table top finishes price group 2
- Table top HPL glued
- Felt floor protectors
- Teflon floor protector
- Fixed castor
- Table frame chrome plated
- Height adjustment 3-7
- Cable slack
- Cable clamp Ø 38-40 mm
- 6-fold gounded socket

## STANDARD

GS-zertifiziert gem. DIN EN 1729-1, DIN EN 1729-2, DIN EN 15372

FEMB level:2017 (Level 3)

## SIZES

| SIZE            | 3       | 4       | 5       | 6       | 7       | 72 cm   | 75 cm   |
|-----------------|---------|---------|---------|---------|---------|---------|---------|
| TABLE WIDTH     | 47.24 " | 47.24 " | 47.24 " | 47.24 " | 47.24 " | 47.24 " | 47.24 " |
| TABLE HEIGHT    | 22.83 " | 25.20 " | 27.56 " | 29.92 " | 32.28 " | 28.35 " | 29.53 " |
| TABLE DEPTH     | 23.62 " | 23.62 " | 23.62 " | 23.62 " | 23.62 " | 23.62 " | 23.62 " |
| STACKABILITY    | -       | -       | -       | -       | -       | -       | -       |
| NUMBER OF SEATS | 1       | 1       | 1       | 1       | 1       | 1       | 1       |
| WEIGHT          | 40 lb   | 41 lb   | 42 lb   | 44 lb   | 45 lb   | 43 lb   | 44 lb   |

Our range of materials and colors can be found in the A2S material overview.



A2S-Furnishing Systems Ltd.  
ASS-Einrichtungssysteme GmbH  
info@a2s.com  
WWW.A2S.COM

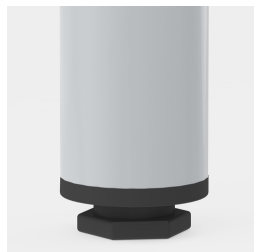
# 4-LEG TABLE, METAL WELDED (120X60 CM) MODEL 1005.126



## BENEFITS/SPECIALS



Melamine coated table top with robust plastic edge



Floor saver with level compensation compensates for uneven floors



Optional frame mobile by means of 2 fixed castors