

# MONO-COLUMN TABLE (51.18"X31.50") MODEL 7615.138



## STANDARD VERSION

Tabletop, 3-layer chipboard (E1), melamine coated, highly abrasion-resistant, with 0.12" plastic edge, thickness: 0.98".

**Note:** Table height specifications refer to a tabletop thickness of 0.98".

Table mounting plate, steel: 0.12".

Table column, pneumatic height adjustment, square: 2.64" x 2.64". Height adjustment by means of safety hand release under the table top. Table column powder coated.

4-star powder coated base, with 4 double swivel locking casters with rubber coating.

Crossbar made of rectangular tube: 1.57"/0.79"/0.08".

Table top shape: oval

## OPTIONS

- Table top finishes price group 2
- Table top compact board 0.47"
- Table top HPL glued
- Safe deposit drawer lockable

## STANDARD

GS-zertifiziert gem. DIN EN 15372

FEMB level:2017 (Level 3)

## SIZES

TABLE WIDTH	51.18 "
TABLE HEIGHT	27.95-43.31 "
TABLE DEPTH	31.50 "
STACKABILITY	-
NUMBER OF SEATS	1
WEIGHT	69 lb

Our range of materials and colors can be found in the A2S material overview.



A2S-Furnishing Systems Ltd.  
ASS-Einrichtungssysteme GmbH  
info@a2s.com  
WWW.A2S.COM

# MONO-COLUMN TABLE (51.18"X31.50") MODEL 7615.138



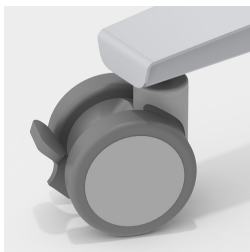
## BENEFITS/SPECIALS



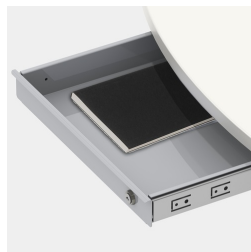
Melamine coated table top with robust plastic edge



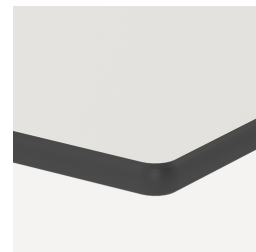
Safety hand release prevents unintentional triggering of height adjustment



Including 4 robust double swivel casters with total locking device



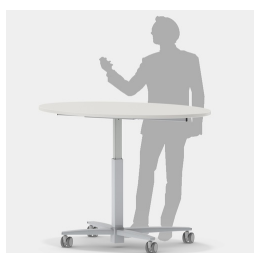
Optionally with lockable steel valuables drawer



Optional compact board as table top



Infinitely height adjustable in the range 27.56"-43.31"



Can also be used as a mobile lectern