



STANDARD VERSION

Steel with 5 shelves. Load capacity per shelf 308 lb 10 oz. Longitudinal stabilization by diagonal braces. Hole spacing 0.98". All parts powder coated.

OPTIONS

- 0602 Steel shelf, D 50 cm

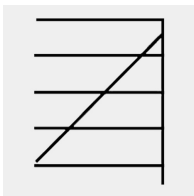
TECHNICAL SPECIFICATIONS

WIDTH	39.37 "
TOTAL HEIGHT	78.74 "
DEPTH	19.69 "
NO. OF ADJUSTABLE SHELVES	5
WEIGHT	56 lb

BENEFITS/SPECIALS



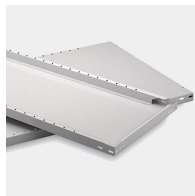
Plug-in system without screws



Diagonal brace increases resistance to distortion



Robust steel frame



Stable steel bases