

STANDARD VERSION

Steel with 5 shelves. Load capacity per shelf 308 lb 10 oz. Longitudinal stabilization by diagonal braces. Hole spacing 0.98". All parts powder coated.

OPTIONS

- 0602 Steel shelf, D 50 cm

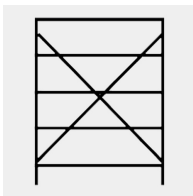
TECHNICAL SPECIFICATIONS

| | |
|----------------------------------|---------|
| WIDTH | 39.37 " |
| TOTAL HEIGHT | 78.74 " |
| DEPTH | 19.69 " |
| NO. OF ADJUSTABLE SHELVES | 5 |
| WEIGHT | 71 lb |

BENEFITS/SPECIALS



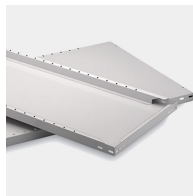
Plug-in system without screws



Diagonal struts increase resistance to distortion



Robust steel frame



Stable steel bases