

## STANDARD VERSION

Steel with 5 shelves. Load capacity per shelf 308 lb 10 oz. Longitudinal stabilization by diagonal braces. Hole spacing 0.98". All parts powder coated.

## OPTIONS

- 0600 Steel shelf, D 30 cm

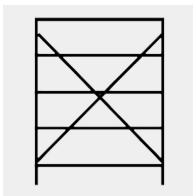
## TECHNICAL SPECIFICATIONS

<b>WIDTH</b>	39.37 "
<b>TOTAL HEIGHT</b>	78.74 "
<b>DEPTH</b>	11.81 "
<b>NO. OF ADJUSTABLE SHELVES</b>	5
<b>WEIGHT</b>	55 lb

## BENEFITS/SPECIALS



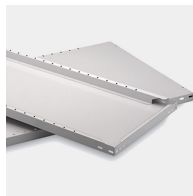
Plug-in system without screws



Diagonal struts increase resistance to distortion



Robust steel frame



Stable steel bases