

# PROPERTY CABINET MODEL 4015.820



## STANDARD VERSION

Body, 3-layer particle board (E1), melamine coated, highly abrasion-resistant, with 1 mm plastic edge, thickness 19 mm.

Rear panel, 3-layer chipboard (E1), melamine-coated, highly abrasion-resistant, grooved all around, thickness 8 mm.

Cabinet including base.

The color assortment for the Tidy Boxes can be selected as desired. Please specify when ordering.

Back panel, 3-layer chipboard (E1), melamine coated, highly abrasion-resistant, grooved all around, thickness 8 mm.

## OPTIONS

- Decoration group 2
- with side handles
- Castors for cabinet base
- Back wall covered with cork
- Magnetic back panel, white
- Base adjustment
- Steel base (chrome silver 9006)

## STANDARD

DIN EN 14074, DIN EN 14073-2, DIN EN 14073-3, DIN EN 16121, DIN EN 16122

FEMB level:2017 (Level 3)

## TECHNICAL SPECIFICATIONS

FOLDER HEIGHT	2
WIDTH	54.33 "
TOTAL HEIGHT	35.04 "
DEPTH	18.90 "
WEIGHT	176 lb

Our range of materials and colors can be found in the A2S material overview.



A2S-Furnishing Systems Ltd.  
ASS-Einrichtungssysteme GmbH  
info@a2s.com  
WWW.A2S.COM

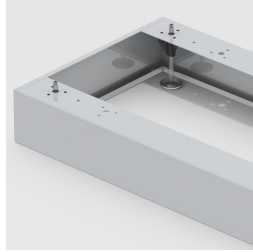
# PROPERTY CABINET MODEL 4015.820



## BENEFITS/SPECIALS



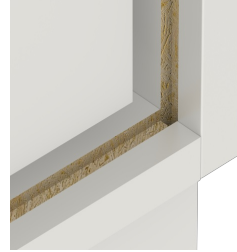
Board material melamine coated with robust plastic edge



Optionally with robust steel base



Mobile on 4 castors, 2 of which are lockable



Resistance to warping due to 8 mm thick back wall



Carcass firmly dowelled and glued ex works



robust Tidy Boxes