

BASE CABINET WITH TIDY BOXES

MODEL 4129.623



STANDARD VERSION

Body, 3-layer particle board (E1), melamine coated, highly abrasion-resistant, with 1 mm plastic edge, thickness 19 mm.
Rear panel, 3-layer chipboard (E1), melamine-coated, highly abrasion-resistant, grooved all around, thickness 8 mm.
Back panel, 3-layer chipboard (E1), melamine coated, highly abrasion-resistant, grooved all around, thickness 8 mm.
Base unit for multifunctional sliding shelving system, suitable for shelf units with Tidy Boxes 4740.070/4741.104
The color assortment for the Tidy Boxes can be selected as desired. Please specify when ordering.
Cabinet including base.
With 9 large Tidy Boxes.

OPTIONS

- Decoration group 2
- Base adjustment
- Steel base (chrome silver 9006)

STANDARD

FEMB level:2017 (Level 3)

TECHNICAL SPECIFICATIONS

WIDTH	41.34 "
TOTAL HEIGHT	29.92 "
DEPTH	18.90 "
WEIGHT	143 lb

Our range of materials and colors can be found in the A2S material overview.



A2S-Furnishing Systems Ltd.
ASS-Einrichtungssysteme GmbH
info@a2s.com
WWW.A2S.COM

BASE CABINET WITH TIDY BOXES

MODEL 4129.623



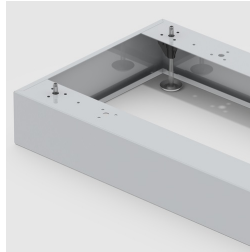
BENEFITS/SPECIALS



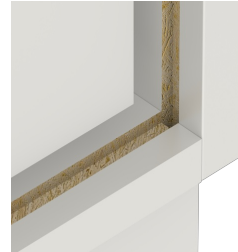
Board material melamine coated with robust plastic edge



Tidy boxes for storing gloves, hats etc.



Optionally with robust steel base



Resistance to warping due to 8 mm thick back wall



Carcass firmly dowelled and glued ex works