

BASE CABINET WITH TIDY BOXES

MODEL 4129.423



STANDARD VERSION

Body, 3-layer particle board (E1), melamine coated, highly abrasion-resistant, with 1 mm plastic edge, thickness 19 mm.

Rear panel, 3-layer chipboard (E1), melamine-coated, highly abrasion-resistant, grooved all around, thickness 8 mm.

Back panel, 3-layer chipboard (E1), melamine coated, highly abrasion-resistant, grooved all around, thickness 8 mm.

Base unit for multifunctional sliding shelving system, suitable for shelf units with Tidy Boxes 4740.070/4741.104

The color assortment for the Tidy Boxes can be selected as desired. Please specify when ordering.

Cabinet including base.

With 6 large Tidy Boxes.

OPTIONS

■ Decoration group 2

■ Base adjustment

■ Steel base (chrome silver 9006)

STANDARD

FEMB level:2017 (Level 3)

TECHNICAL SPECIFICATIONS

| | |
|--------------|---------|
| WIDTH | 27.56 " |
| TOTAL HEIGHT | 29.92 " |
| DEPTH | 18.90 " |
| WEIGHT | 121 lb |

Our range of materials and colors can be found in the A2S material overview.



A2S-Furnishing Systems Ltd.
ASS-Einrichtungssysteme GmbH
info@a2s.com
WWW.A2S.COM

BASE CABINET WITH TIDY BOXES MODEL 4129.423



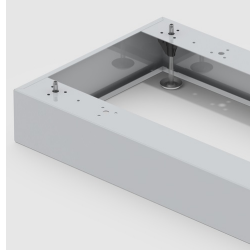
BENEFITS/SPECIALS



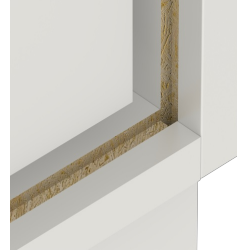
Board material melamine
coated with robust plastic edge



Tidy boxes for storing gloves,
hats etc.



Optionally with robust steel
base



Resistance to warping due to 8
mm thick back wall



Carcass firmly dowelled and
glued ex works