

# BASE CABINET WITH TIDY BOXES

## MODEL 4128.621



### STANDARD VERSION

Body, 3-layer particle board (E1), melamine coated, highly abrasion-resistant, with 1 mm plastic edge, thickness 19 mm.  
Rear panel, 3-layer chipboard (E1), melamine-coated, highly abrasion-resistant, grooved all around, thickness 8 mm.  
Back panel, 3-layer chipboard (E1), melamine coated, highly abrasion-resistant, grooved all around, thickness 8 mm.  
Base unit for multifunctional sliding shelving system, suitable for shelf units with Tidy Boxes 4740.070/4741.104  
The color assortment for the Tidy Boxes can be selected as desired. Please specify when ordering.  
Cabinet including base.  
With 18 small Tidy Boxes.

### OPTIONS

- Decoration group 2
- Base adjustment
- Steel base (chrome silver 9006)

### STANDARD

FEMB level:2017 (Level 3)

### TECHNICAL SPECIFICATIONS

WIDTH	41.34 "
TOTAL HEIGHT	29.92 "
DEPTH	18.90 "
WEIGHT	143 lb

Our range of materials and colors can be found in the A2S material overview.



A2S-Furnishing Systems Ltd.  
ASS-Einrichtungssysteme GmbH  
info@a2s.com  
WWW.A2S.COM

# BASE CABINET WITH TIDY BOXES

## MODEL 4128.621



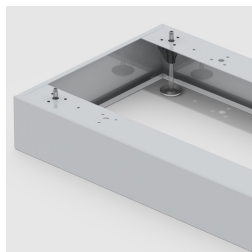
### BENEFITS/SPECIALS



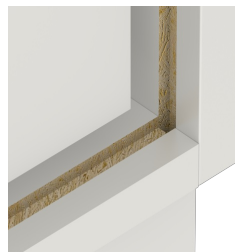
Board material melamine coated with robust plastic edge



Tidy boxes for storing gloves, hats etc.



Optionally with robust steel base



Resistance to warping due to 8 mm thick back wall



Carcass firmly dowelled and glued ex works