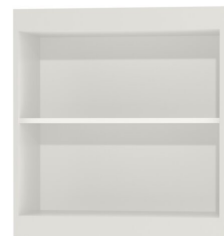


TOP SHELF, FOR MULTIFUNCTIONAL BOARD SYSTEM MODEL 4730.600



STANDARD VERSION

Body, 3-layer particle board (E1), melamine coated, highly abrasion-resistant, with 1 mm plastic edge, thickness 19 mm.

Rear panel, 3-layer chipboard (E1), melamine-coated, highly abrasion-resistant, grooved all around, thickness 8 mm.

Back panel, 3-layer chipboard (E1), melamine coated, highly abrasion-resistant, grooved all around, thickness 8 mm.

With possibility to attach the aluminum guide rail for multifunctional panel system.

OPTIONS

- Decoration group 2
- Shelf (additional)

STANDARD

FEMB level:2017 (Level 3)

TECHNICAL SPECIFICATIONS

WIDTH	31.50 "
TOTAL HEIGHT	34.25/50.39 "
DEPTH	14.17/16.54/18.90/20.47/22.83 "
NO. OF ADJUSTABLE SHELVES	2
WEIGHT	110 lb

Our range of materials and colors can be found in the A2S material overview.



A2S-Furnishing Systems Ltd.
ASS-Einrichtungssysteme GmbH
info@a2s.com
WWW.A2S.COM

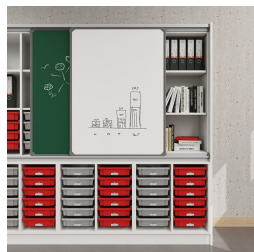
TOP SHELF, FOR MULTIFUNCTIONAL BOARD SYSTEM MODEL 4730.600



BENEFITS/SPECIALS



Board material melamine coated with robust plastic edge



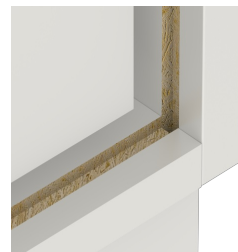
Sliding panel with aluminum guide rails and additional storage space behind the panels



Shelf attachment with tidy boxes behind the panels



Pull-out proof shelf supports



Resistance to warping due to 8 mm thick back wall



Carcass firmly dowelled and glued ex works