

# CHANGE CADDY OPEN ON ONE SIDE MODEL 4130.505



## STANDARD VERSION

Material made of 3-layer chipboard (E1), melamine coated, with 0.08" plastic edge, material thickness 0.75". Back panel thickness 0.31". Rounded aluminum profile corners.

Includes invisible connection system by means of magnets.

2 shelves, lower compartment with 1 small and 1 large Tidy Box. Upper and middle compartment at folder height.

The color assortment for the Tidy Boxes can be selected as desired. Please specify when ordering.

## OPTIONS

- Decoration group 2
- Sides glued with magnetic laminate

## STANDARD

FEMB level:2017 (Level 3)

## TECHNICAL SPECIFICATIONS

|                         |         |
|-------------------------|---------|
| WIDTH                   | 14.96 " |
| TOTAL HEIGHT            | 44.09 " |
| DEPTH                   | 21.65 " |
| NO. OF FIXED<br>SHELVES | 2       |
| WEIGHT                  | 110 lb  |

Our range of materials and colors can be found in the A2S material overview.



A2S-Furnishing Systems Ltd.  
ASS-Einrichtungssysteme GmbH  
info@a2s.com  
WWW.A2S.COM

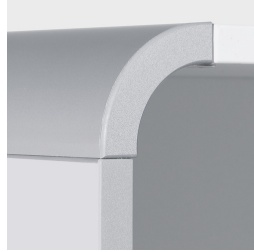
# CHANGE CADDY OPEN ON ONE SIDE MODEL 4130.505



## BENEFITS/SPECIALS



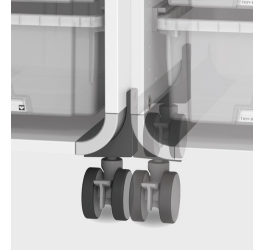
Board material melamine coated with robust plastic edge



Rounded aluminum profile corners



Mobile on 4 castors, 2 of which are lockable



Magnetic linking system



Optionally with magnetic pages



Tidy boxes for storing gloves, hats etc.