

MAGAZINE CABINET

MODEL 4399.850



STANDARD VERSION

Body, 3-layer particle board (E1), melamine coated, highly abrasion-resistant, with 1 mm plastic edge, thickness 19 mm.
 Rear panel, 3-layer chipboard (E1), melamine-coated, highly abrasion-resistant, grooved all around, thickness 8 mm.
 Back panel, 3-layer chipboard (E1), melamine coated, highly abrasion-resistant, grooved all around, thickness 8 mm.
 Doors, 3-layer particle board (E1), melamine coated, highly abrasion resistant, with 2 mm plastic edge, thickness 19 mm.
 Arch handle chrome matt
 Cabinet including base.
 Top with 12 magazine flaps. Bottom 2-door 2 OH, individually lockable on both sides.

OPTIONS

- Handle PG 2
- Base adjustment
- Steel base (chrome silver 9006)
- Decoration group 2
- Front decors price group 2
- Front HPL glued
- Shelf (additional)

STANDARD

FEMB level:2017 (Level 3)

TECHNICAL SPECIFICATIONS

| | |
|---------------------------|---------|
| FOLDER HEIGHT | 5 |
| WIDTH | 47.24 " |
| TOTAL HEIGHT | 80.31 " |
| DEPTH | 17.32 " |
| NO. OF ADJUSTABLE SHELVES | 2 |
| NO. OF FIXED SHELVES | 6 |
| WEIGHT | 176 lb |

Our range of materials and colors can be found in the A2S material overview.



A2S-Furnishing Systems Ltd.
 ASS-Einrichtungssysteme GmbH
 info@a2s.com
 WWW.A2S.COM

MAGAZINE CABINET MODEL 4399.850



BENEFITS/SPECIALS



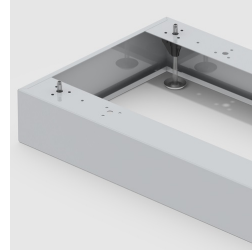
Board material melamine coated with robust plastic edge



Metal cup hinges with 240° opening angle



Pull-out proof shelf supports



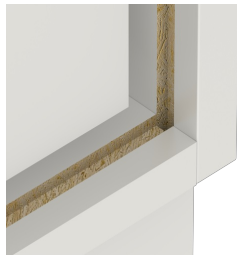
Optionally with robust steel base



1 OH cabinet with handle or lock



Carcass firmly dowelled and glued ex works



Resistance to warping due to 8 mm thick back wall