

ROLLER SHUTTER CABINET (D 22.83")

MODEL 4532.620



STANDARD VERSION

Body, 3-layer particle board (E1), melamine coated, highly abrasion-resistant, with 1 mm plastic edge, thickness 19 mm.

Rear panel, 3-layer chipboard (E1), melamine-coated, highly abrasion-resistant, grooved all around, thickness 8 mm.

Back panel, 3-layer chipboard (E1), melamine coated, highly abrasion-resistant, grooved all around, thickness 8 mm.

Material body made of 3-layer chipboard (E1), melamine coated, material thickness 0.75". Body with 0.04" plastic edge. Plastic roller shutters with profile width 1.04", with aluminum handle strip with catch, lockable. Grooved guide rail in black.

Note: 1 folder height (OH) \triangleq 38.4 cm

Cabinet including base.

OPTIONS

- Decoration group 2
- Castors for cabinet base
- Shelf (additional)
- Base adjustment
- Steel base (chrome silver 9006)

STANDARD

DIN EN 14074, DIN EN 14073-2, DIN EN 14073-3, DIN EN 16121, DIN EN 16122

FEMB level:2017 (Level 3)

TECHNICAL SPECIFICATIONS

FOLDER HEIGHT	2
WIDTH	31.50 "
TOTAL HEIGHT	35.04 "
DEPTH	22.83 "
NO. OF ADJUSTABLE SHELVES	1
WEIGHT	119 lb

Our range of materials and colors can be found in the A2S material overview.



A2S-Furnishing Systems Ltd.
ASS-Einrichtungssysteme GmbH
info@a2s.com
WWW.A2S.COM

ROLLER SHUTTER CABINET (D 22.83")

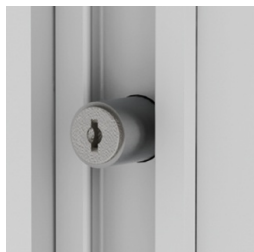
MODEL 4532.620



BENEFITS/SPECIALS



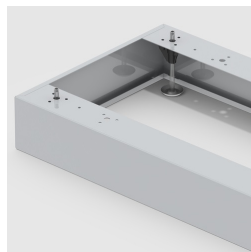
Board material melamine
coated with robust plastic edge



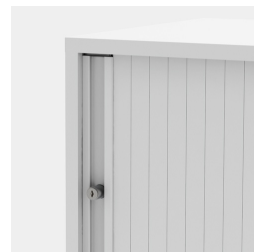
Roller sliding doors lockable



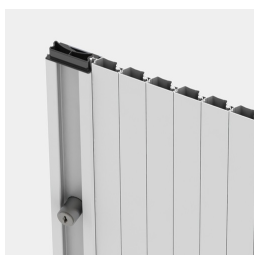
Pull-out proof shelf supports



Optionally with robust steel
base



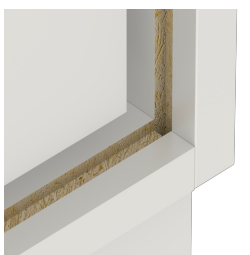
Handle with recessed grip



Stable guide rails



Carcass firmly dowelled and
glued ex works



Resistance to warping due to 8
mm thick back wall



Pupil compartment shelves
optionally mobile with castors.