



STANDARD VERSION

Body, 3-layer particle board (E1), melamine coated, highly abrasion-resistant, with 1 mm plastic edge, thickness 19 mm.
Rear panel, 3-layer chipboard (E1), melamine-coated, highly abrasion-resistant, grooved all around, thickness 8 mm.
Back panel, 3-layer chipboard (E1), melamine coated, highly abrasion-resistant, grooved all around, thickness 8 mm.
Material body made of 3-layer chipboard (E1), melamine coated, material thickness 0.75". Body with 0.04" plastic edge. Plastic roller shutters with profile width 1.04", with aluminum handle strip with catch, lockable. Grooved guide rail in black.
Note: 1 folder height (OH) ± 38.4 cm
Cabinet including base.

OPTIONS

- Decoration group 2
- Shelf (additional)
- Base adjustment
- Steel base (chrome silver 9006)

STANDARD

DIN EN 14074, DIN EN 14073-2, DIN EN 14073-3, DIN EN 16121, DIN EN 16122
FEMB level:2017 (Level 3)

TECHNICAL SPECIFICATIONS

FOLDER HEIGHT	5
WIDTH	31.50 "
TOTAL HEIGHT	80.31 "
DEPTH	16.54 "
NO. OF ADJUSTABLE SHELVES	4
WEIGHT	128 lb

BENEFITS/SPECIALS



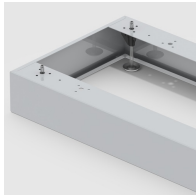
Board material melamine coated with robust plastic edge



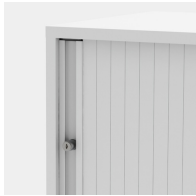
Roller sliding doors lockable



Pull-out proof shelf supports



Optionally with robust steel base



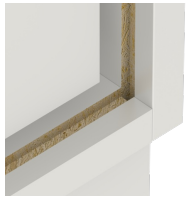
Handle with recessed grip



Stable guide rails



Carcass firmly dowelled and glued ex works



Resistance to warping due to 8 mm thick back wall