

COMBINATION HANGING FILING CABINET (D 23.62") MODEL 4156.650



STANDARD VERSION

Body, 3-layer particle board (E1), melamine coated, highly abrasion-resistant, with 1 mm plastic edge, thickness 19 mm.

Rear panel, 3-layer chipboard (E1), melamine-coated, highly abrasion-resistant, grooved all around, thickness 8 mm.

Back panel, 3-layer chipboard (E1), melamine coated, highly abrasion-resistant, grooved all around, thickness 8 mm.

Material body, base and doors made of 3-layer chipboard (E1), melamine coated, material thickness 0.75". Body and shelves with 0.04" plastic edge, doors with 0.08" plastic edge.

Cabinet including base.

Note: 1 folder height (OH) \triangleq 38.4 cm

Upper 2 FH 2-door, lockable on one side, lower 3 FH with hanging file, with central locking.

OPTIONS

- Decoration group 2
- Shelf (additional)
- Base adjustment
- Front decors price group 2
- Handle PG 2

STANDARD

DIN EN 14074, DIN EN 14073-2, DIN EN 14073-3, DIN EN 16121, DIN EN 16122

FEMB level:2017 (Level 3)

TECHNICAL SPECIFICATIONS

FOLDER HEIGHT	5
WIDTH	31.50 "
TOTAL HEIGHT	80.31 "
DEPTH	23.62 "
NO. OF ADJUSTABLE SHELVES	1
NO. OF FIXED SHELVES	1
WEIGHT	205 lb

Our range of materials and colors can be found in the A2S material overview.



A2S-Furnishing Systems Ltd.
ASS-Einrichtungssysteme GmbH
info@a2s.com
WWW.A2S.COM

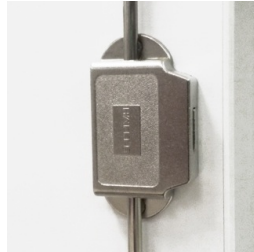
COMBINATION HANGING FILING CABINET (D 23.62") MODEL 4156.650



BENEFITS/SPECIALS



Board material melamine coated with robust plastic edge



High quality locking bar



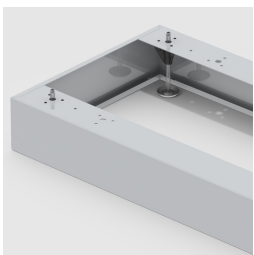
Pull-out proof shelf supports



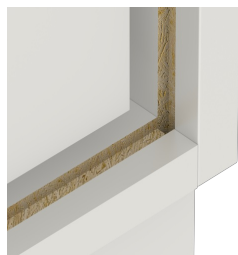
Metal cup hinges with 240° opening angle



1 OH cabinet with handle or lock



Optionally with robust steel base



Resistance to warping due to 8 mm thick back wall



Including hanging file drawer



Carcass firmly dowelled and glued ex works