



STANDARD VERSION

Body, 3-layer particle board (E1), melamine coated, highly abrasion-resistant, with 1 mm plastic edge, thickness 19 mm.
 Rear panel, 3-layer chipboard (E1), melamine-coated, highly abrasion-resistant, grooved all around, thickness 8 mm.
 Back panel, 3-layer chipboard (E1), melamine coated, highly abrasion-resistant, grooved all around, thickness 8 mm.
 Material body, base and front made of 3-layer chipboard (E1), melamine coated, material thickness 0.75". Body with 0.04" plastic edge, front with 0.08" plastic edge. Suspension file drawers with parallel mechanism and central locking, maximum load 97 lb.
 Cabinet including base.
Note: 1 folder height (OH) \pm 38.4 cm

OPTIONS

- Decoration group 2
- Front decors price group 2
- Handle PG 2
- Steel base (chrome silver 9006)

STANDARD

FEMB level:2017 (Level 3)

DIN EN 14074, DIN EN 14073-2, DIN EN 14073-3, DIN EN 16121, DIN EN 16122

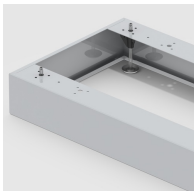
TECHNICAL SPECIFICATIONS

FOLDER HEIGHT	3
WIDTH	31.50 "
TOTAL HEIGHT	50.00 "
DEPTH	23.62 "
WEIGHT	187 lb

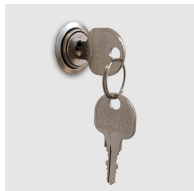
BENEFITS/SPECIALS



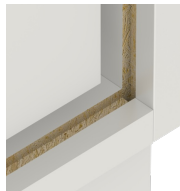
Board material melamine coated with robust plastic edge



Optionally with robust steel base



Cupboard with central locking



Resistance to warping due to 8 mm thick back wall



Including hanging file drawer