

COMBINATION CABINET, 1-DOOR BOTTOM, OPEN TOP (D 17.32")

MODEL 4235.450



STANDARD VERSION

Body, 3-layer particle board (E1), melamine coated, highly abrasion-resistant, with 1 mm plastic edge, thickness 19 mm.

Rear panel, 3-layer chipboard (E1), melamine-coated, highly abrasion-resistant, grooved all around, thickness 8 mm.

Back panel, 3-layer chipboard (E1), melamine coated, highly abrasion-resistant, grooved all around, thickness 8 mm.

Material body, base and doors made of 3-layer chipboard (E1), melamine coated, material thickness 0.75". Body and shelves with 0.04" plastic edge, doors with 0.08" plastic edge.

Cabinet including base.

Note: 1 folder height (OH) \triangleq 38.4 cm

1-door open top, lockable.

OPTIONS

- Decoration group 2
- Front decors price group 2
- Front HPL glued
- Shelf (additional)
- Handle PG 2
- Base adjustment
- Steel base (chrome silver 9006)

STANDARD

DIN EN 14074, DIN EN 14073-2, DIN EN 14073-3, DIN EN 16121, DIN EN 16122

FEMB level:2017 (Level 3)

TECHNICAL SPECIFICATIONS

FOLDER HEIGHT	5
WIDTH	24.02 "
TOTAL HEIGHT	80.31 "
DEPTH	17.32 "
NO. OF ADJUSTABLE SHELVES	3
NO. OF FIXED SHELVES	1
WEIGHT	134 lb

Our range of materials and colors can be found in the A2S material overview.



A2S-Furnishing Systems Ltd.
ASS-Einrichtungssysteme GmbH
info@a2s.com
WWW.A2S.COM

COMBINATION CABINET, 1-DOOR BOTTOM, OPEN TOP (D 17.32")

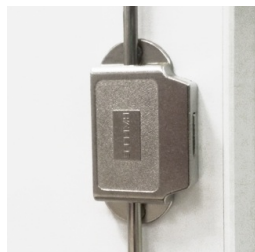
MODEL 4235.450



BENEFITS/SPECIALS



Board material melamine coated with robust plastic edge



High quality locking bar



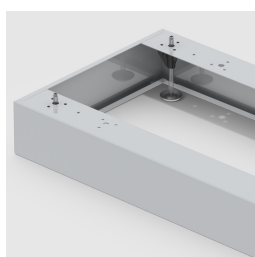
Pull-out proof shelf supports



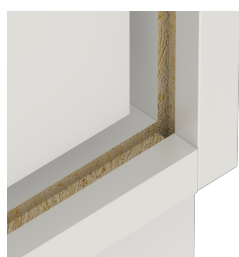
Metal cup hinges with 240° opening angle



1 OH cabinet with handle or lock



Optionally with robust steel base



Resistance to warping due to 8 mm thick back wall



Carcass firmly dowelled and glued ex works