

# CLASSROOM DESK (27.56"X19.69"/21.65") MODEL 9530



## STANDARD VERSION

Tabletop, 3-layer chipboard (E1), melamine coated, highly abrasion-resistant, with 0.12" plastic edge, thickness: 0.98".

**Note:** Table height specifications refer to a tabletop thickness of 0.98".

C-shape double column underframe. Side parts oval tube: 1.57"/0.79"/0.06" and 1.97"/1.18"/0.08", plate support steel angle: 1.18"/1.18"/. Oval tube crossbar: 1.97"/0.79"/0.08", welded in as fascia. Frame epoxy coated, with plastic floor protector.

With satchel hooks on both sides.

## OPTIONS

- Tabletop with ASSODUR® edge
- Table top HPL glued
- Table top glued with solid wood edge glue-in crowned
- Table top WOODMARK, 0.85"
- Table top compact board 0.47"
- Table top Multiplex, 0.79"
- Felt floor protectors
- Glossy, galvanized book basket
- Chair suspension C-shape chairs
- Chair suspension
- Chair suspension PAGHOLZ® sled-base chair
- Plastic box A3 including rails
- 1 pair of rails for Tidy Box
- Tidy Box including rails

## STANDARD

DIN EN 1729-1, DIN EN 1729-2

FEMB level:2017 (Level 3)

## SIZES

SIZE	2	3	4	5	6	7
TABLE WIDTH	27.56 "	27.56 "	27.56 "	27.56 "	27.56 "	27.56 "
TABLE HEIGHT	20.47 "	22.83 "	25.20 "	27.56 "	29.92 "	32.28 "
TABLE DEPTH	19.69/21.65 "	19.69/21.65 "	19.69/21.65 "	19.69/21.65 "	19.69/21.65 "	19.69/21.65 "
STACKABILITY	-	-	-	-	-	-
NUMBER OF SEATS	1	1	1	1	1	1
WEIGHT	24 lb	25 lb	26 lb	28 lb	29 lb	30 lb

Our range of materials and colors can be found in the A2S material overview.



A2S-Furnishing Systems Ltd.  
ASS-Einrichtungssysteme GmbH  
info@a2s.com  
WWW.A2S.COM

# CLASSROOM DESK (27.56"X19.69"/21.65") MODEL 9530



## BENEFITS/SPECIALS



Melamine coated table top with robust plastic edge



Optional melamine coated table top with ASSODUR® edge



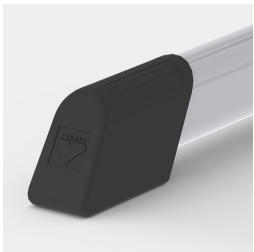
Optional compact board as table top



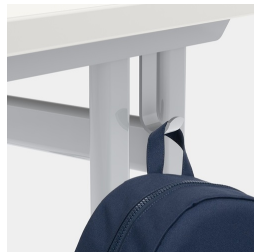
Optional table top multiplex melamine coated



Optional melamine coated table top with solid wood edge



Floor protectors with integrated step protection



Including satchel hooks left and right



Optional WOODMARK table top in shatterproof quality



Due to C-shape no disturbance of the table legs when getting in and out of the table