

PYLON SINGLE-SURFACE SLIDING BOARD, GREEN STEEL (118.11"X47.24")

MODEL 6853210



STANDARD VERSION

With stable column guide for wall mounting. Writing surface enamelled and magnetic steel, glued with support plate, guided between the pylons. Edges with natural anodized aluminum profiles and rounded plastic corners. Edging glued watertight. Board includes marker tray.

OPTIONS

- Extension of the pylons
- Picture strip
- Picture clamp
- Blackboard eraser
- Eraser Felt
- Holder for whiteboard pens
- Whiteboard pen
- Magnets Ø 1.18"
- Power magnets Ø 1.42"
- Drawing tool set, 4 pieces
- Drawing tool set, 4 pieces
- Drawing tool set, 6 pieces
- Rulings 01/ 02/ 03/ 04/ 05/ 07/ 08/ 10/ 11/ 12/ 15

STANDARD

DIN EN 14434, DIN EN 71-3

TECHNICAL SPECIFICATIONS

WIDTH	118.11 "
HEIGHT	47.24 "
PYLON HEIGHT	106.30 "
NO. OF WRITING SURFACES	1
WEIGHT	247 lb
VERSION	adjustable in height, wall mounted

Our range of materials and colors can be found in the A2S material overview.



A2S-Furnishing Systems Ltd.
ASS-Einrichtungssysteme GmbH
info@a2s.com
WWW.A2S.COM

PYLON SINGLE-SURFACE SLIDING BOARD, GREEN STEEL (118.11"X47.24")

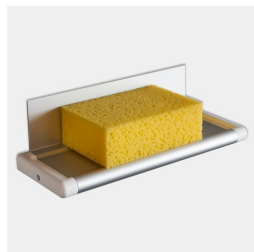
MODEL 6853210



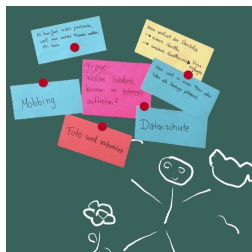
BENEFITS/SPECIALS



Maintenance-free, low-noise precision guidance on 8 ball-bearing track rollers



Eraser tray for wall mounting included



Magnetic surface can be written on with chalk