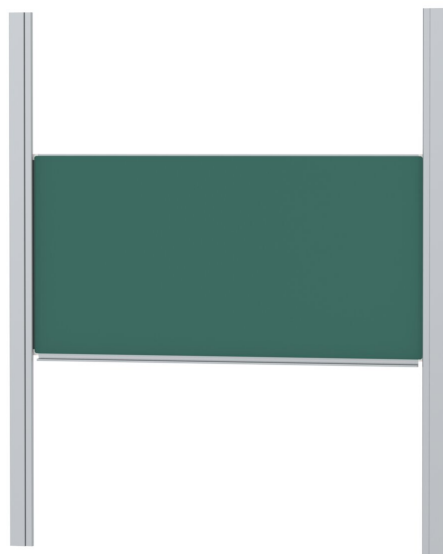


# PYLON SINGLE-SURFACE SLIDING BOARD, GREEN STEEL (78.74"X39.37")

MODEL 6853205



## STANDARD VERSION

With stable column guide for wall mounting. Writing surface enamelled and magnetic steel, glued with support plate, guided between the pylons. Edges with natural anodized aluminum profiles and rounded plastic corners. Edging glued watertight. Board includes marker tray.

## OPTIONS

- Extension of the pylons
- Picture strip
- Picture clamp
- Blackboard eraser
- Eraser Felt
- Holder for whiteboard pens
- Whiteboard pen
- Magnets Ø 1.18"
- Power magnets Ø 1.42"
- Drawing tool set, 4 pieces
- Drawing tool set, 4 pieces
- Drawing tool set, 6 pieces
- Rulings 01/ 02/ 03/ 04/ 05/ 07/ 08/ 10/ 11/ 12/ 15

## STANDARD

DIN EN 14434, DIN EN 71-3

## TECHNICAL SPECIFICATIONS

WIDTH	78.74 "
HEIGHT	39.37 "
PYLON HEIGHT	106.30 "
NO. OF WRITING SURFACES	1
WEIGHT	172 lb
VERSION	adjustable in height, wall mounted

Our range of materials and colors can be found in the A2S material overview.



A2S-Furnishing Systems Ltd.  
ASS-Einrichtungssysteme GmbH  
info@a2s.com  
WWW.A2S.COM

# PYLON SINGLE-SURFACE SLIDING BOARD, GREEN STEEL (78.74"X39.37")

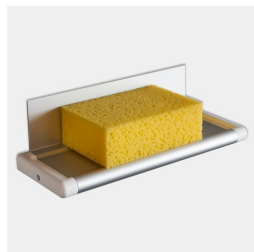
MODEL 6853205



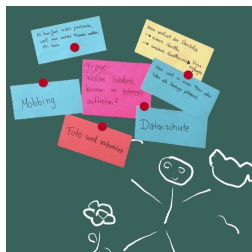
## BENEFITS/SPECIALS



Maintenance-free, low-noise precision guidance on 8 ball-bearing track rollers



Eraser tray for wall mounting included



Magnetic surface can be written on with chalk