

# CORK LINOLEUM WALL BOARD (118.11"X39.37") MODEL 6815409



## STANDARD VERSION

Long wall mounted board. Sandwich support panel, edges with natural anodized aluminum profiles and rounded plastic corners. Edging glued watertight.

Surface made of cork linoleum, glued with carrier plate.

## OPTIONS

- Picture strip
- Picture clamp
- Tray
- Tack set

## STANDARD

DIN EN 14434, DIN EN 71-3

## TECHNICAL SPECIFICATIONS

WIDTH	118.11 "
HEIGHT	39.69 "
NO. OF WRITING SURFACES	1
WEIGHT	103 lb
VERSION	wall mounted

Our range of materials and colors can be found in the A2S material overview.



A2S-Furnishing Systems Ltd.  
ASS-Einrichtungssysteme GmbH  
info@a2s.com  
WWW.A2S.COM

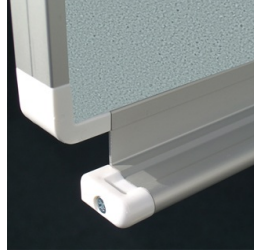
# CORK LINOLEUM WALL BOARD (118.11"X39.37") MODEL 6815409



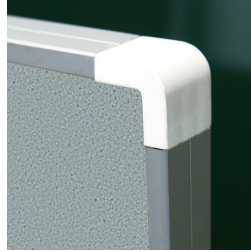
## BENEFITS/SPECIALS



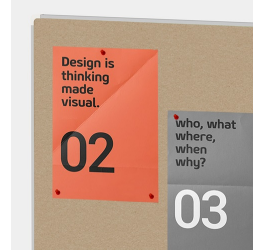
Optionally with picture clamping bar



Matching shelf for chalk and pens



Edge protection due to rounded safety corners



Tackable surface