

WOODMARK SWIVEL SPINDLE CHAIR MODEL 7950



STANDARD VERSION

Seat and back separate and shaped to fit the body. Made of multiplex, surface melamine coated and pore sealed with a scratch, impact and abrasion resistant finish produced in the pressing process.
In beech D334 as standard. Seat surface with pressed-in, anti-slip knobs. Edges softly rounded.
Steel 5-star base, infinitely variable height adjustment by concealed steel swivel spindle with anti-rotation device. Round tubular column: 1.97", epoxy coated. Floor protector with step protection.

OPTIONS

- WOODMARK maple D033 or gray white U023
- Seat and back color stained
- Seat and back riveted
- Felt floor protectors

STANDARD

FEMB level:2017 (Level 3)

DIN EN 1729-1, DIN EN 1729-2

LOAD CAPACITY

276 lb

SIZES

SIZE	5-7
CHAIR WIDTH	22.44 "
CHAIR HEIGHT	29.92-37.01 "
SEAT HEIGHT	16.14-23.23 "
CHAIR DEPTH	22.44 "
STACKABILITY	-
WEIGHT	19 lb

Our range of materials and colors can be found in the A2S material overview.

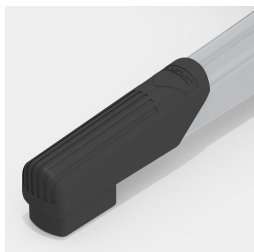


A2S-Furnishing Systems Ltd.
ASS-Einrichtungssysteme GmbH
info@a2s.com
WWW.A2S.COM

WOODMARK SWIVEL SPINDLE CHAIR MODEL 7950



BENEFITS/SPECIALS



Robust plastic floor protectors
with step protection



Seat surface with pressed-in,
anti-slip knobs



Seat and back concealed
screwed



Extremely robust steel base



Seat and back melamine
coated: scratch, break and
impact resistant; flame
retardant