

SWIVEL SPINDLE CHAIR WITH CASTERS

MODEL 7849



STANDARD VERSION

PAGHOLZ® waisted shell, with ergonomic three-dimensional shell shape. Surface melamine coated and pore sealed with a scratch, impact and abrasion resistant finish created in the pressing process. Seat and back surface with pressed-in texture. Steel 5-star base, infinitely variable height adjustment by concealed steel swivel spindle with anti-rotation device. Round tubular column: 1.97", epoxy coated. Load-dependent braked casters with step protection.

OPTIONS

- PAGHOLZ® Color Wood - Price group 2
- PAGHOLZ® COLOUR WOOD
- Handle hole
- Seat upholstery price group 1 (size 6E, 7)
- Backrest upholstery price group 1 (size 6E, 7)
- Seat upholstery price group 2 (size 6E, 7)
- Back upholstery price group 2 (size 6E, 7)
- Seat upholstery price group 3 (size 6E, 7)
- Backrest upholstery price group 3 (size 6E, 7)
- Seat upholstery price group 4 (size 6E, 7)
- Backrest upholstery price group 4 (size 6E, 7)

STANDARD

FEMB level:2017 (Level 3)

DIN EN 1729-1, DIN EN 1729-2

LOAD CAPACITY

276 lb

SIZES

| | |
|--------------|---------------|
| SIZE | 5-7 |
| CHAIR WIDTH | 26.77 " |
| CHAIR HEIGHT | 27.56-33.46 " |
| SEAT HEIGHT | 15.75-22.83 " |
| CHAIR DEPTH | 26.77 " |
| STACKABILITY | - |
| WEIGHT | 14 lb |

Our range of materials and colors can be found in the A2S material overview.



A2S-Furnishing Systems Ltd.
ASS-Einrichtungssysteme GmbH
info@a2s.com
WWW.A2S.COM

SWIVEL SPINDLE CHAIR WITH CASTERS

MODEL 7849



BENEFITS/SPECIALS



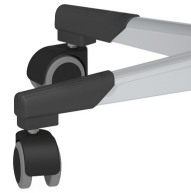
PAGHOLZ® from sustainable forestry



Optionally with grip hole, round or oval



Optionally with seat and backrest upholstery (only sizes 6E, 7)



Optional swivel spindle base with rubberized double casters



Indestructible PAGHOLZ® shell, scratch, break and impact resistant; flame retardant



Ergonomically and orthopedically adapted shell shape

FABRIC PROPERTIES

INTENSIVE Price group 1

100% polyester | flame retardant according to EN 1021 1&2 | 8.82 oz/y² +/-5% | 100,000 Martindale tours | linting 5 | ÖKO-Tex 100

SKANDIA Price group 1

100% polyester | flame retardant according to EN 1021 1 | 8.64 oz/y² +/-5% | 70,000 Martindale tours | linting 4-5 | ÖKO-Tex 100

FLEECE Price group 1

100% polyester | flame retardant BS 5852:Part1:1979 (cigarette) | 14.18 oz/y² | 100,000 Martindale tours | linting 4 | ÖKO-Tex 100

TAFF B1 Price group 2

100% polyester | flame retardant according to EN 1021 1&2, DIN 4102 B1 | 9.17 oz/y² +/-5% | 70,000 Martindale tours | linting 5 | ÖKO-Tex 100

WOOL Price group 3

100% wool | flame retardant according to EN 1021 1&2 | 16.23 oz/y² +/-5% | 35,000 Martindale tours | linting 4 | tested for harmful substances

PROTEX Price group 3

surface 100% vinyl / fabric 100% polyester | flame retardant according to EN 1021 1&2, DIN 4102 B2 | 24.16 oz/y² | 300,000 Martindale tours | no linting | wipeable with soap and water, water repellent, antibacterial, anti-static, stain resistant, resistant to blood and urine, mold resistant backing and surface, resistant to disinfectants

ARTIFICIAL LEATHER Price group 3

surface 100% polyurethane/ fabric 65% polyester, 35% cotton | flame retardant according to EN 1021-1 | 15.34 oz/y² +/-10% | 100,000 Martindale tours | no linting | tested for harmful substances

ARTIFICIAL LEATHER B1 Price group 4

85% PVC compound, 15% cotton knit | flame retardant according to EN 1021 1&2, DIN 4102 B1 | weight 27.51 +/-1.76 oz/y² | 75,000 Martindale tours | no linting | tested for harmful substances | resistant to blood and urine, resistant to disinfectants