



STANDARD VERSION

Body, 3-layer particle board (E1), melamine coated, highly abrasion-resistant, with 1 mm plastic edge, thickness 19 mm.  
Rear panel, 3-layer chipboard (E1), melamine-coated, highly abrasion-resistant, grooved all around, thickness 8 mm.  
The glued-in, 8 mm thick back panel gives the carcass its stability and strength.  
**Note:** 1 folder height (OH) ± 38.4 cm  
Cabinet including base.

OPTIONS

- Decoration group 2
- Castors for cabinet base
- Shelf (additional)
- Base adjustment
- Steel base (chrome silver 9006)

STANDARD

DIN EN 14074, DIN EN 14073-2, DIN EN 14073-3, DIN EN 16121, DIN EN 16122

FEMB level:2017 (Level 3)

TECHNICAL SPECIFICATIONS

|                                 |         |
|---------------------------------|---------|
| FOLDER HEIGHT                   | 3       |
| WIDTH                           | 39.37 " |
| TOTAL HEIGHT                    | 50.00 " |
| HEIGHT OF COMBI<br>TOP CABINET  | 45.28 " |
| DEPTH                           | 22.83 " |
| NO. OF<br>ADJUSTABLE<br>SHELVES | 2       |
| WEIGHT                          | 207 lb  |

3  
39.37 "  
50.00 "  
45.28 "  
22.83 "  
2  
207 lb

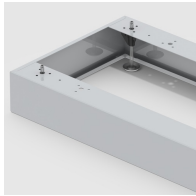
BENEFITS/SPECIALS



Board material melamine coated with robust plastic edge



Pull-out proof shelf supports



Optionally with robust steel base



Mobile on 4 castors, 2 of which are lockable



Resistance to warping due to 8 mm thick back wall



Carcass firmly dowelled and glued ex works