

SHELF, WITH CENTER PANEL

MODEL 4490.640



STANDARD VERSION

Body, 3-layer particle board (E1), melamine coated, highly abrasion-resistant, with 1 mm plastic edge, thickness 19 mm.

Rear panel, 3-layer chipboard (E1), melamine-coated, highly abrasion-resistant, grooved all around, thickness 8 mm.

The glued-in, 8 mm thick back panel gives the carcass its stability and strength.

Note: 1 folder height (OH) \triangleq 38.4 cm

Cabinet including base.

OPTIONS

- Decoration group 2
- Castors for cabinet base
- Shelf (additional)
- Base adjustment
- Steel base (chrome silver 9006)

STANDARD

DIN EN 14074, DIN EN 14073-2, DIN EN 14073-3, DIN EN 16121, DIN EN 16122

FEMB level:2017 (Level 3)

TECHNICAL SPECIFICATIONS

FOLDER HEIGHT	4
WIDTH	31.50 "
TOTAL HEIGHT	64.96 "
DEPTH	22.83 "
NO. OF ADJUSTABLE SHELVES	6
WEIGHT	172 lb

Our range of materials and colors can be found in the A2S material overview.



A2S-Furnishing Systems Ltd.
ASS-Einrichtungssysteme GmbH
info@a2s.com
WWW.A2S.COM

SHELF, WITH CENTER PANEL

MODEL 4490.640



BENEFITS/SPECIALS



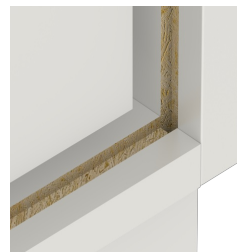
Board material melamine coated with robust plastic edge



Pull-out proof shelf supports



Optionally with robust steel base



Resistance to warping due to 8 mm thick back wall



Carcass firmly dowelled and glued ex works