

FLEXLAB TRANSPORT CADDY WITH TOP PLATE AND DOOR

MODEL 4131.003



STANDARD VERSION

4 swivel castors, 2 with total brakes.

Decor in in U023.

Storage compartment open at the top, space for up to 9 small tidy boxes at the bottom.

Side support strip and locking mechanism for top panel made of compressed fiberboard with black core, thickness: 16 mm, underside with cut-outs for form-fit connection with 2 FLEXLAB transport caddies.

Lockable door made of compressed fiberboard with black core, thickness: 16 mm, with 270° opening angle, with acrylic glass panel, left hinged.

OPTIONS

TECHNICAL SPECIFICATIONS

WIDTH	38 cm
TOTAL HEIGHT	105 cm
DEPTH	52 cm
WEIGHT	41 kg

Our range of materials and colors can be found in the A2S material overview.



Management System
ISO 14001:2015
ISO 9001:2015
www.a2s.com
© 2018/05/23



A2S-Furnishing Systems Ltd.
ASS-Einrichtungssysteme GmbH
info@a2s.com
WWW.A2S.COM

FLEXLAB TRANSPORT CADDY WITH TOP PLATE AND DOOR

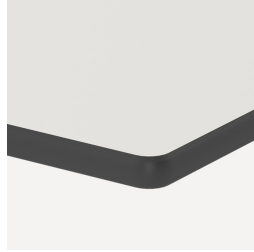
MODEL 4131.003



BENEFITS/SPECIALS



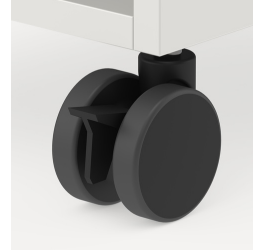
Board material melamine coated with robust plastic edge



Robuste und widerstandsfähige CDF-Platte



Tidy boxes for storing gloves, hats etc.



Mobilität durch 4 stabilen Rollen, davon 2 feststellbar



Verriegelung für Aufsatzplatte



Die verglaste Front gibt freie Sicht auf die Materialien



Zusätzliche Arbeitsfläche durch Aufsatzplatte