



## STANDARD VERSION

**Note:** 1 folder height (OH)  $\triangleq$  38.4 cm

Base, body and shelves made of 3-layer chipboard (E1), melamine coated, material thickness 19 mm. Center layer B1 according to DIN 4102, body flame retardant. Base milled out at the rear as well as base adjusters in the cabinet sides. Body and shelves with 1 mm plastic edge, doors with 2 mm plastic edge. Door HPL-coated on both sides, thus particularly scratch-resistant. Door with continuous silver-colored aluminum handle strip. Flame-retardant version for use in public areas. Connected to each other with connecting screws. Optionally with lock, plate or pin cylinder.

## OPTIONS

- Plate cylinder
- Lock with pin cylinder change core
- Front decors Price group 1
- Front decors price group 2

## STANDARD

FEMB level:2017 (Level 3)

GS-zertifiziert gem. DIN EN 15372:2017-02

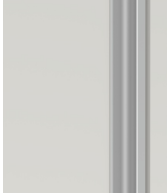
## TECHNICAL SPECIFICATIONS

<b>FOLDER HEIGHT</b>	5
<b>WIDTH</b>	36 cm
<b>TOTAL HEIGHT</b>	204 cm
<b>DEPTH</b>	58 cm
<b>NO. OF ADJUSTABLE SHELVES</b>	3
<b>NO. OF FIXED SHELVES</b>	1
<b>WEIGHT</b>	61 kg

## BENEFITS/SPECIALS



Board material melamine coated with robust plastic edge



Cabinet-height handles keep the escape route clear and are easy to reach from any height.



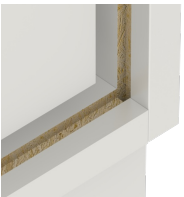
In 3 different equipment variants.



Pull-out proof shelf supports



Support panel material flame-retardant according to DIN 4102 B1



Resistance to warping due to 8 mm thick back wall



Carcass firmly doweled and glued ex works