

FOLDING TABLE (160X70 CM) MODEL 3920.167



STANDARD VERSION

Center column base with double tube, side parts round tube: 30/2 mm, foldable incl. hard rubber stacking protectors. Beveled aluminum frame under table top, natural anodized. Frame epoxy coated, with plastic floor protectors.
Table top, chipboard, HPL glued, highly abrasion-resistant, with 3 mm plastic edge, thickness: 25 mm

Note: Table height specifications refer to a top thickness of 25 mm.

Note: With optional solid wood frame Table top made of 3-layer chipboard (E1), melamine-coated

OPTIONS

- Table top finishes price group 2
- Glue-in crowned
- Solid wood frame, recessed (for directly coated chipboard)
- Table top HPL glued
- Felt floor protectors
- Table frame chrome plated

STANDARD

GS-zertifiziert gem. DIN EN 15372

FEMB level:2017 (Level 3)

SIZES

TABLE WIDTH	160 cm	160 cm
TABLE HEIGHT	72 cm	75 cm
TABLE DEPTH	70 cm	70 cm
STACKABILITY	16 pcs.	16 pcs.
NUMBER OF SEATS	4	4
WEIGHT	30 kg	30 kg

Our range of materials and colors can be found in the A2S material overview.



A2S-Furnishing Systems Ltd.
ASS-Einrichtungssysteme GmbH
info@a2s.com
WWW.A2S.COM

FOLDING TABLE (160X70 CM) MODEL 3920.167



BENEFITS/SPECIALS



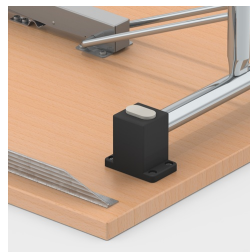
Melamine coated table top with robust plastic edge



Optional melamine coated table top with solid wood edge



Optionally with recessed solid wood frame



Stacking protectors protect the table top from scratch marks



Easy folding of the table legs



Stackable up to 16 tables