



STANDARD VERSION

Body, 3-layer particle board (E1), melamine coated, highly abrasion-resistant, with 1 mm plastic edge, thickness 19 mm.
Rear panel, 3-layer chipboard (E1), melamine-coated, highly abrasion-resistant, grooved all around, thickness 8 mm.
Back panel, 3-layer chipboard (E1), melamine coated, highly abrasion-resistant, grooved all around, thickness 8 mm.
Doors, 3-layer particle board (E1), melamine coated, highly abrasion resistant, with 2 mm plastic edge, thickness 19 mm.
Arch handle chrome matt

Note: 1 folder height (OH) \pm 38.4 cm
Cabinet including base.

OPTIONS

- Decoration group 2
- Front decors price group 2
- Front HPL glued
- Castors for cabinet base
- Shelf (additional)
- Handle PG 2
- Base adjustment
- Steel base (chrome silver 9006)

STANDARD

DIN EN 14074, DIN EN 14073-2, DIN EN 14073-3, DIN EN 16121, DIN EN 16122

FEMB level:2017 (Level 3)

TECHNICAL SPECIFICATIONS

| | |
|------------------------|--------|
| FOLDER HEIGHT | 3 |
| WIDTH | 100 cm |
| TOTAL HEIGHT | 127 cm |
| HEIGHT OF COMBI | 115 cm |
| TOP CABINET | |
| DEPTH | 44 cm |
| NO. OF | 2 |
| ADJUSTABLE | |
| SHELVES | |
| WEIGHT | 87 kg |

BENEFITS/SPECIALS



Board material melamine coated with robust plastic edge



1 OH cabinet with handle or lock



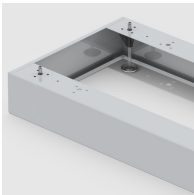
Metal cup hinges with 240° opening angle



Pull-out proof shelf supports



High quality locking bar



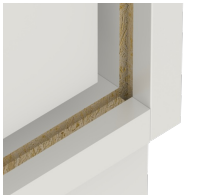
Optionally with robust steel base



Mobile on 4 castors, 2 of which are lockable



Carcass firmly doweled and glued ex works



Resistance to warping due to 8 mm thick back wall