

HINGED DOOR CABINET (D 44 CM) MODEL 4401.240



STANDARD VERSION

Body, 3-layer particle board (E1), melamine coated, highly abrasion-resistant, with 1 mm plastic edge, thickness 19 mm.

Rear panel, 3-layer chipboard (E1), melamine-coated, highly abrasion-resistant, grooved all around, thickness 8 mm.

Back panel, 3-layer chipboard (E1), melamine coated, highly abrasion-resistant, grooved all around, thickness 8 mm.

Doors, 3-layer particle board (E1), melamine coated, highly abrasion resistant, with 2 mm plastic edge, thickness 19 mm.

Arch handle chrome matt

Note: 1 folder height (OH) \pm 38.4 cm

Cabinet including base.

OPTIONS

- Decoration group 2
- Front decors price group 2
- Front HPL glued
- Shelf (additional)
- Handle PG 2
- Base adjustment
- Steel base (chrome silver 9006)

STANDARD

DIN EN 14074, DIN EN 14073-2, DIN EN 14073-3, DIN EN 16121, DIN EN 16122

FEMB level:2017 (Level 3)

TECHNICAL SPECIFICATIONS

FOLDER HEIGHT	4
WIDTH	41 cm
TOTAL HEIGHT	165 cm
DEPTH	44 cm
NO. OF COMPARTMENTS	2
NO. OF ADJUSTABLE SHELVES	3
WEIGHT	47 kg

Our range of materials and colors can be found in the A2S material overview.



A2S-Furnishing Systems Ltd.
ASS-Einrichtungssysteme GmbH
info@a2s.com
WWW.A2S.COM

HINGED DOOR CABINET (D 44 CM) MODEL 4401.240



BENEFITS/SPECIALS



Board material melamine
coated with robust plastic edge



1 OH cabinet with handle or
lock



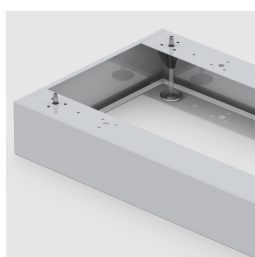
Metal cup hinges with 240°
opening angle



Pull-out proof shelf supports



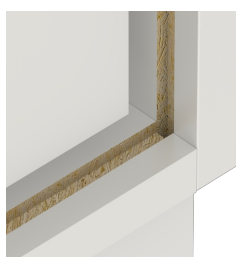
High quality locking bar



Optionally with robust steel
base



Carcass firmly doweled and
glued ex works



Resistance to warping due to 8
mm thick back wall