

STANDARD VERSION

Steel with 5 shelves. Load capacity per shelf 140 kg. Longitudinal stabilization by diagonal braces. Hole spacing 25 mm. All parts powder coated.

OPTIONS

- 0602 Steel shelf, D 50 cm

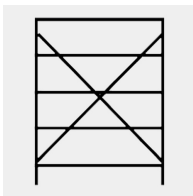
TECHNICAL SPECIFICATIONS

WIDTH	100 cm
TOTAL HEIGHT	200 cm
DEPTH	50 cm
NO. OF ADJUSTABLE SHELVES	5
WEIGHT	32 kg

BENEFITS/SPECIALS



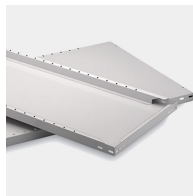
Plug-in system without screws



Diagonal struts increase resistance to distortion



Robust steel frame



Stable steel bases