

STANDARD VERSION

Steel with 5 shelves. Load capacity per shelf 140 kg. Longitudinal stabilization by diagonal braces. Hole spacing 25 mm. All parts powder coated.

OPTIONS

- 0600 Steel shelf, D 30 cm

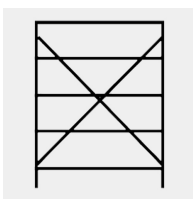
TECHNICAL SPECIFICATIONS

| | |
|----------------------------------|--------|
| WIDTH | 100 cm |
| TOTAL HEIGHT | 200 cm |
| DEPTH | 30 cm |
| NO. OF ADJUSTABLE SHELVES | 5 |
| WEIGHT | 25 kg |

BENEFITS/SPECIALS



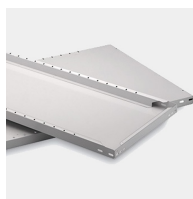
Plug-in system without screws



Diagonal struts increase resistance to distortion



Robust steel frame



Stable steel bases