

STANDARD VERSION

Body, 3-layer particle board (E1), melamine coated, highly abrasion-resistant, with 1 mm plastic edge, thickness 19 mm.
 Rear panel, 3-layer chipboard (E1), melamine-coated, highly abrasion-resistant, grooved all around, thickness 8 mm.
 Back panel, 3-layer chipboard (E1), melamine coated, highly abrasion-resistant, grooved all around, thickness 8 mm.
 Cabinet including base.

OPTIONS

- Decoration group 2
- with side handles
- Castors for cabinet base
- Shelf (additional)
- Base adjustment
- Steel base (chrome silver 9006)

STANDARD

FEMB level:2017 (Level 3)

DIN EN 14074, DIN EN 14073-2, DIN EN 14073-3, DIN EN 16121, DIN EN 16122

TECHNICAL SPECIFICATIONS

| | |
|----------------------------------|--------|
| FOLDER HEIGHT | 2 |
| WIDTH | 120 cm |
| TOTAL HEIGHT | 89 cm |
| DEPTH | 58 cm |
| NO. OF COMPARTMENTS | 16 |
| NO. OF ADJUSTABLE SHELVES | 12 |
| WEIGHT | 84 kg |

BENEFITS/SPECIALS



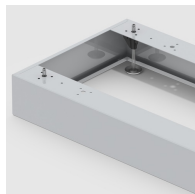
Board material melamine coated with robust plastic edge



Mobile on 4 castors, 2 of which are lockable



Pull-out proof shelf supports



Optionally with robust steel base



Carcass firmly doweled and glued ex works