



## STANDARD VERSION

Body, 3-layer particle board (E1), melamine coated, highly abrasion-resistant, with 1 mm plastic edge, thickness 19 mm.

Rear panel, 3-layer chipboard (E1), melamine-coated, highly abrasion-resistant, grooved all around, thickness 8 mm.

Cabinet including base.

Property cupboard with central wall and compartments.

## OPTIONS

- Decoration group 2
- Castors for cabinet base
- Steel base (chrome silver 9006)
- with side handles
- Base adjustment

## STANDARD

DIN EN 14074, DIN EN 14073-2, DIN EN 14073-3, DIN EN 16121, DIN EN 16122

FEMB level:2017 (Level 3)

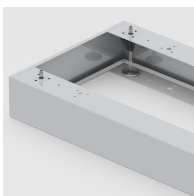
## TECHNICAL SPECIFICATIONS

<b>FOLDER HEIGHT</b>	2
<b>WIDTH</b>	138 cm
<b>TOTAL HEIGHT</b>	89 cm
<b>DEPTH</b>	48 cm
<b>INSIDE MEASURE</b>	24x66x46 cm
<b>COMPARTMENTS</b>	
<b>NO. OF</b>	6
<b>COMPARTMENTS</b>	
<b>NO. OF FIXED</b>	4
<b>SHELVES</b>	
<b>WEIGHT</b>	64 kg

## BENEFITS/SPECIALS



Board material melamine coated with robust plastic edge



Optionally with robust steel base



Mobile on 4 castors, 2 of which are lockable



Resistance to warping due to 8 mm thick back wall



Carcass firmly doweled and glued ex works