



STANDARD VERSION

Material made of 3-layer chipboard (E1), melamine coated, with 2 mm plastic edge, material thickness 19 mm. Back panel thickness 8 mm. Rounded aluminum profile corners.  
Standard with 12 small Tidy Boxes. Single-leaf functional doors front and rear, including vertical handle bar with roller support, lockable. Cabinet mobile on 4 swivel casters, 2 with total brakes.  
The color assortment for the Tidy Boxes can be selected as desired. Please specify when ordering.

OPTIONS

- Decoration group 2
- Front decors price group 2
- Back wall covered with cork
- Front white, writable

STANDARD

FEMB level:2017 (Level 3)  
DIN EN 14074, DIN EN 14073-2, DIN EN 14073-3, DIN EN 16121, DIN EN 16122

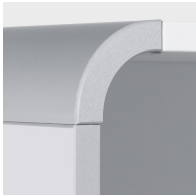
TECHNICAL SPECIFICATIONS

WIDTH	104 cm
TOTAL HEIGHT	164 cm
DEPTH	60 cm
NO. OF ADJUSTABLE SHELVES	2
NO. OF FIXED SHELVES	1
WEIGHT	136 kg

BENEFITS/SPECIALS



Board material melamine coated with robust plastic edge



Rounded aluminum profile corners



Mobile on 4 castors, 2 of which are lockable



Tidy boxes for storing gloves, hats etc.



Metal cup hinges with 240° opening angle



Pull-out proof shelf supports