

ROLLER SHUTTER CABINET, 3 FH MODEL 4531.630



STANDARD VERSION

Body, 3-layer particle board (E1), melamine coated, highly abrasion-resistant, with 1 mm plastic edge, thickness 19 mm.

Rear panel, 3-layer chipboard (E1), melamine-coated, highly abrasion-resistant, grooved all around, thickness 8 mm.

Back panel, 3-layer chipboard (E1), melamine coated, highly abrasion-resistant, grooved all around, thickness 8 mm.

Material body made of 3-layer chipboard (E1), melamine coated, material thickness 19 mm. Body with 1 mm plastic edge. Plastic roller shutters with profile width 26.5 mm, with aluminum handle strip with catch, lockable. Grooved guide rail in black.

Note: 1 folder height (OH) \triangleq 38.4 cm

Cabinet including base.

OPTIONS

- Decoration group 2
- Shelf (additional)
- Base adjustment
- Steel base (chrome silver 9006)

STANDARD

DIN EN 14074, DIN EN 14073-2, DIN EN 14073-3, DIN EN 16121, DIN EN 16122

FEMB level:2017 (Level 3)

TECHNICAL SPECIFICATIONS

FOLDER HEIGHT	3
WIDTH	80 cm
TOTAL HEIGHT	127 cm
DEPTH	42 cm
NO. OF ADJUSTABLE SHELVES	2
WEIGHT	46 kg

Our range of materials and colors can be found in the A2S material overview.



A2S-Furnishing Systems Ltd.
ASS-Einrichtungssysteme GmbH
info@a2s.com
WWW.A2S.COM

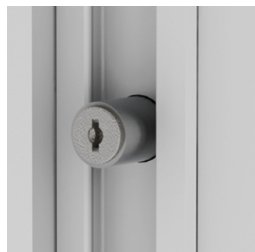
ROLLER SHUTTER CABINET, 3 FH MODEL 4531.630



BENEFITS/SPECIALS



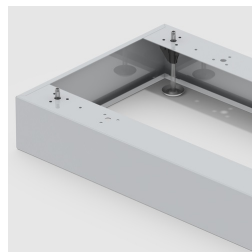
Board material melamine
coated with robust plastic edge



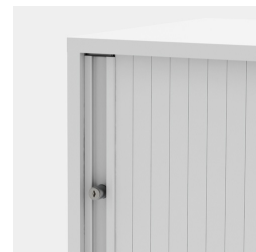
Roller sliding doors lockable



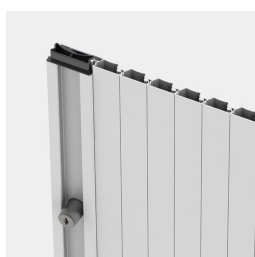
Pull-out proof shelf supports



Optionally with robust steel
base



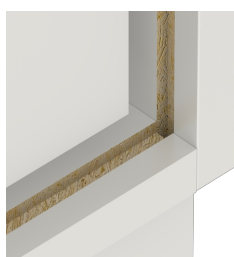
Handle with recessed grip



Stable guide rails



Carcass firmly doweled and
glued ex works



Resistance to warping due to 8
mm thick back wall



Pupil compartment shelves
optionally mobile with castors.