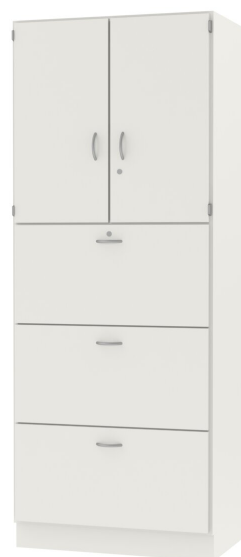


# COMBINATION HANGING FILING CABINET (D 60 CM) MODEL 4156.650



## STANDARD VERSION

Body, 3-layer particle board (E1), melamine coated, highly abrasion-resistant, with 1 mm plastic edge, thickness 19 mm.

Rear panel, 3-layer chipboard (E1), melamine-coated, highly abrasion-resistant, grooved all around, thickness 8 mm.

Back panel, 3-layer chipboard (E1), melamine coated, highly abrasion-resistant, grooved all around, thickness 8 mm.

Material body, base and doors made of 3-layer chipboard (E1), melamine coated, material thickness 19 mm. Body and shelves with 1 mm plastic edge, doors with 2 mm plastic edge.

Cabinet including base.

**Note:** 1 folder height (OH)  $\pm$  38.4 cm

Upper 2 FH 2-door, lockable on one side, lower 3 FH with hanging file, with central locking.

## OPTIONS

- Decoration group 2
- Shelf (additional)
- Base adjustment
- Front decors price group 2
- Handle PG 2

## STANDARD

DIN EN 14074, DIN EN 14073-2, DIN EN 14073-3, DIN EN 16121, DIN EN 16122

FEMB level:2017 (Level 3)

## TECHNICAL SPECIFICATIONS

FOLDER HEIGHT	5
WIDTH	80 cm
TOTAL HEIGHT	204 cm
DEPTH	60 cm
NO. OF ADJUSTABLE SHELVES	1
NO. OF FIXED SHELVES	1
WEIGHT	93 kg

Our range of materials and colors can be found in the A2S material overview.



A2S-Furnishing Systems Ltd.  
ASS-Einrichtungssysteme GmbH  
info@a2s.com  
WWW.A2S.COM

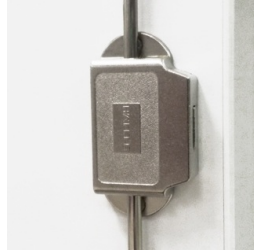
# COMBINATION HANGING FILING CABINET (D 60 CM) MODEL 4156.650



## BENEFITS/SPECIALS



Board material melamine  
coated with robust plastic edge



High quality locking bar



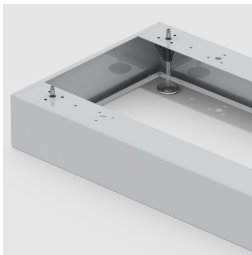
Pull-out proof shelf supports



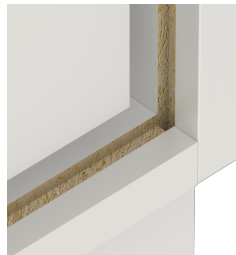
Metal cup hinges with 240°  
opening angle



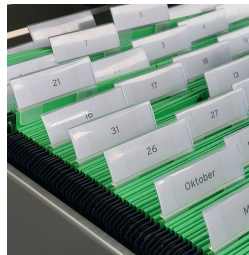
1 OH cabinet with handle or  
lock



Optionally with robust steel  
base



Resistance to warping due to 8  
mm thick back wall



Including hanging file drawer



Carcass firmly doweled and  
glued ex works