

# COMBINATION CABINET, 4-DOOR (D 44 CM) MODEL 4353.850



## STANDARD VERSION

Body, 3-layer particle board (E1), melamine coated, highly abrasion-resistant, with 1 mm plastic edge, thickness 19 mm.

Rear panel, 3-layer chipboard (E1), melamine-coated, highly abrasion-resistant, grooved all around, thickness 8 mm.

Back panel, 3-layer chipboard (E1), melamine coated, highly abrasion-resistant, grooved all around, thickness 8 mm.

Material body, base and doors made of 3-layer chipboard (E1), melamine coated, material thickness 19 mm. Body and shelves with 1 mm plastic edge, doors with 2 mm plastic edge.

Cabinet including base.

**Note:** 1 folder height (OH)  $\pm$  38.4 cm

4-door, individually lockable on both sides, with center panel.

## OPTIONS

- Decoration group 2
- Front decors price group 2
- Front HPL glued
- Shelf (additional)
- Handle PG 2
- Base adjustment
- Steel base (chrome silver 9006)

## STANDARD

DIN EN 14074, DIN EN 14073-2, DIN EN 14073-3, DIN EN 16121, DIN EN 16122

FEMB level:2017 (Level 3)

## TECHNICAL SPECIFICATIONS

FOLDER HEIGHT	5
WIDTH	120 cm
TOTAL HEIGHT	204 cm
DEPTH	44 cm
NO. OF ADJUSTABLE SHELVES	6
NO. OF FIXED SHELVES	2
WEIGHT	110 kg

Our range of materials and colors can be found in the A2S material overview.



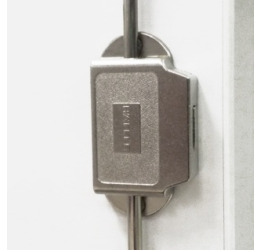
# COMBINATION CABINET, 4-DOOR (D 44 CM) MODEL 4353.850



## BENEFITS/SPECIALS



Board material melamine coated with robust plastic edge



High quality locking bar



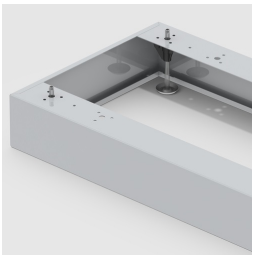
Pull-out proof shelf supports



Metal cup hinges with 240° opening angle



1 OH cabinet with handle or lock



Optionally with robust steel base



Resistance to warping due to 8 mm thick back wall



Carcass firmly doweled and glued ex works