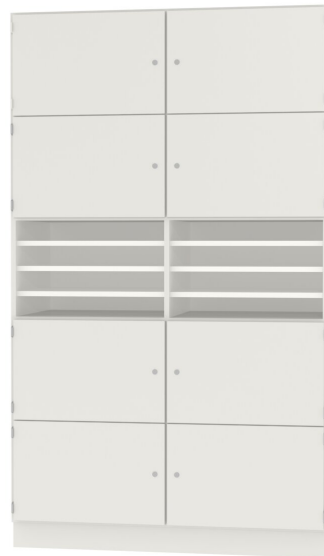


# TEACHER LOCKER, WITH MAIL COMPARTMENTS, 5 FH (D 60 CM)

## MODEL 4282.850



### STANDARD VERSION

Body, 3-layer particle board (E1), melamine coated, highly abrasion-resistant, with 1 mm plastic edge, thickness 19 mm.

Rear panel, 3-layer chipboard (E1), melamine-coated, highly abrasion-resistant, grooved all around, thickness 8 mm.

Back panel, 3-layer chipboard (E1), melamine coated, highly abrasion-resistant, grooved all around, thickness 8 mm.

Cabinet including base.

Teacher compartments individually lockable.

**Note:** 1 folder height (OH)  $\hat{=}$  38.4 cm

### OPTIONS

- Decoration group 2
- Front decors price group 2
- Front HPL glued
- Shelf (additional)
- Handle PG 2
- Lock with pin cylinder change core
- Base adjustment
- Steel base (chrome silver 9006)
- Doors different colors

### STANDARD

DIN EN 14074, DIN EN 14073-2, DIN EN 14073-3, DIN EN 16121, DIN EN 16122

FEMB level:2017 (Level 3)

### TECHNICAL SPECIFICATIONS

FOLDER HEIGHT	5
WIDTH	120 cm
TOTAL HEIGHT	204 cm
DEPTH	60 cm
INSIDE MEASURE	8x57x54 cm
COMPARTMENTS	
NO. OF	8
COMPARTMENTS	
WEIGHT	178 kg

Our range of materials and colors can be found in the A2S material overview.



A2S-Furnishing Systems Ltd.  
ASS-Einrichtungssysteme GmbH  
info@a2s.com  
WWW.A2S.COM

# TEACHER LOCKER, WITH MAIL COMPARTMENTS, 5 FH (D 60 CM) MODEL 4282.850



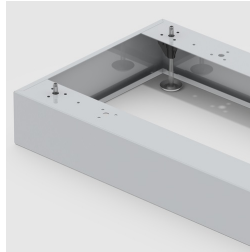
## BENEFITS/SPECIALS



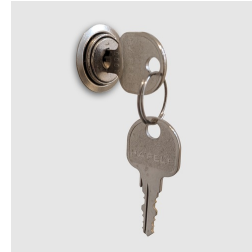
Board material melamine coated with robust plastic edge



Metal cup hinges with 240° opening angle



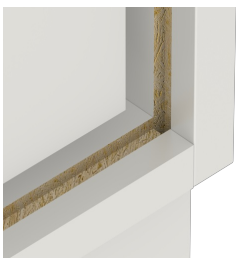
Optionally with robust steel base



Cupboard with central locking



Carcass firmly doweled and glued ex works



Resistance to warping due to 8 mm thick back wall